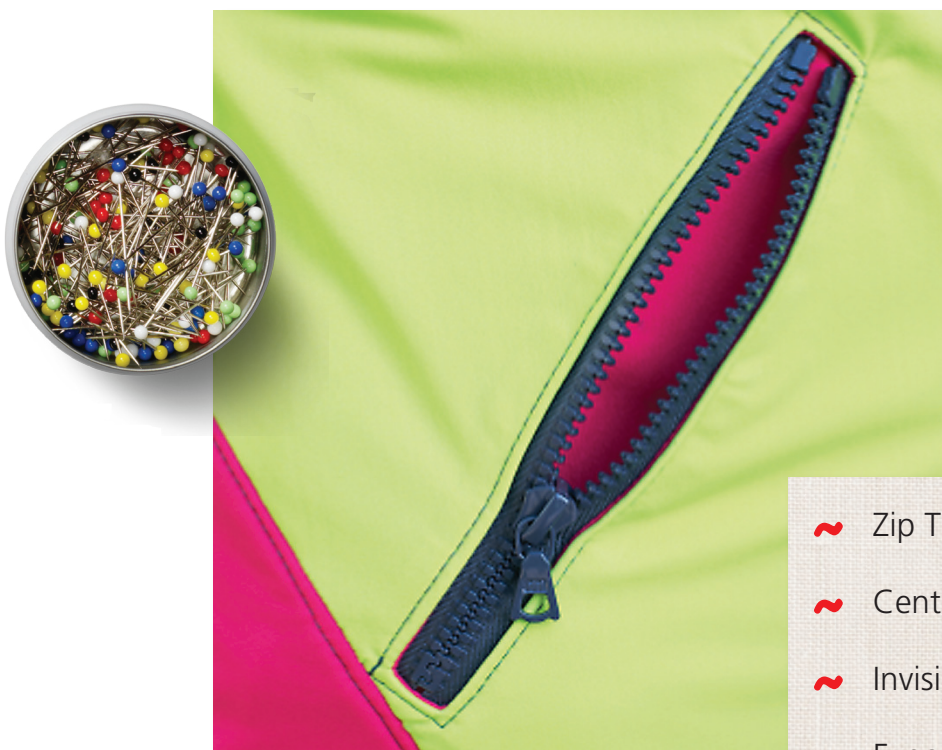


eBook
SERIES

Just SEW It!

Zipper Applications



© 2014 BERNINA of America

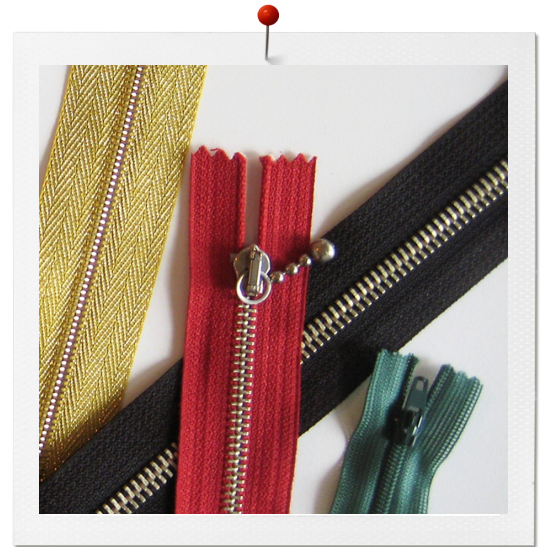
- ~ Zip Tips
- ~ Centered Zipper
- ~ Invisible Zipper
- ~ Exposed Zipper

Zipper Applications

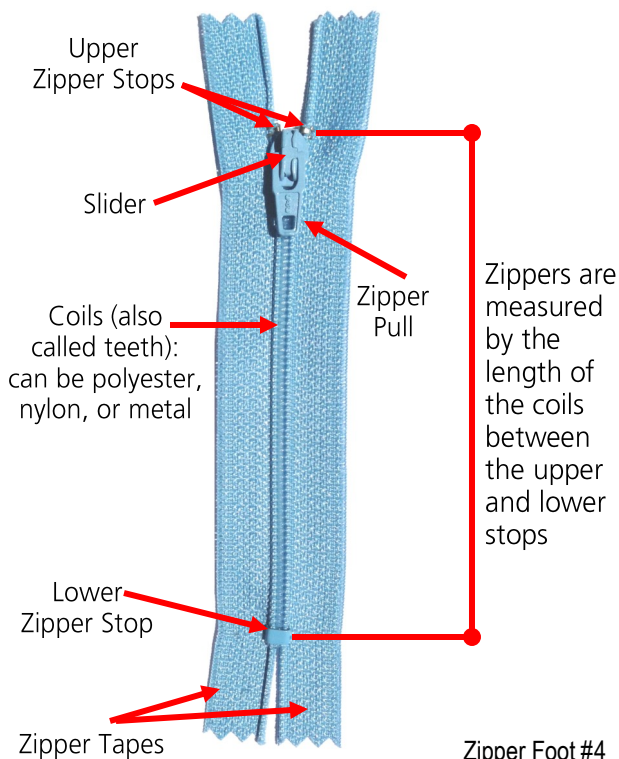
Invented in the 1800s, the zipper is an amazing notion that is usually taken for granted. Imagine trying to get in and out of clothes without the use of zippers. There are several types of zippers and even more applications for almost any type of project – dresses, skirts, purses, media cases, bags and more.

The following basic zipper techniques are described on the following pages:

- Centered Zipper
- Exposed Zipper
- Invisible Zipper



Anatomy of a Zipper



Zipper Presser Feet

It is almost impossible to stitch a clean, inconspicuous zipper application without a zipper foot, which allows the stitching to be placed close to the coils. BERNINA offers several zipper feet shown here.

Zipper Foot #4



Zipper Foot #4D



Zipper Foot with Guide #14D



Invisible Zipper Foot #35



Non-Stick Zipper Foot with Guide #54



Zippers

Conventional Zipper – Used mainly in seams of skirts and pants, and at neckline opening of tops and dresses, conventional zippers are closed at the bottom and zip down from the top (see photo at left).

Invisible Zipper – Easy to install, the invisible zipper requires a special foot that will hold the polyester coils out of the way so the needle can stitch the zipper on the seam line of the garment. Once the zipper is closed, the only part of it that is visible is the teardrop tab.

Another type of zipper commonly used on sportswear is a separating zipper that pulls apart into two separate tapes, each with teeth made of plastic or metal along one edge. An additional type of zipper is the trouser zipper with extra wide tapes and heavy-duty metal teeth.

Zip Tips

When possible use a zipper 2"-4" longer than the opening it will be sewn into. This eliminates the need to sew around the pull tab. Close the zipper for stitching so the tab is above the upper edge of the project, but don't forget to unzip it before trimming it even with the upper edge.

Use a large seam allowance – $\frac{3}{4}$ " to 1" – for the seam where the zipper is to be inserted. Add the desired extra amount ($\frac{1}{8}$ " to $\frac{3}{8}$ ") to the appropriate edges when cutting out the project.

Fuse a strip of lightweight fusible interfacing, 1" to 1½" wide, to the wrong side of the fabric, covering the seam line on each of the two pieces that are being stitched together.

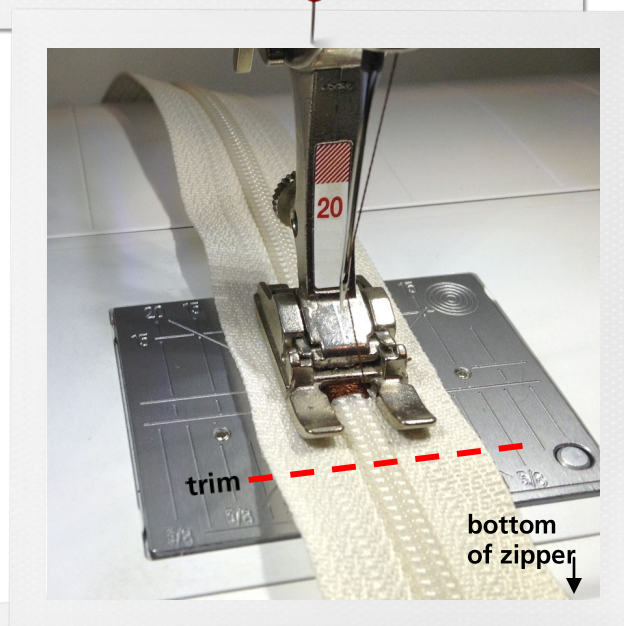
Finish raw edges of the fabric if desired before starting the zipper application.

Conventional zippers are easy to shorten if a shorter one is needed. Find the desired length by measuring from the top down. Zigzag in place (feed dog lowered) across the coils at this point and then trim the zipper tape below the stitching. *Note: Open Embroidery Foot #20/20C/20D works well for this.*

If the machine has a presser foot recognition feature, select the presser foot being used. This will limit the needle positions so the needle will not strike the foot and break.

When topstitching along both sides of a zipper, sew in the same direction (from the bottom up) to avoid distorting the fabric. This is especially important in garments so the zipper lays flat for a smooth fit.

For perfect topstitching when sewing a zipper, use Foot #14 (older models only), Foot #14D (for models with the Dual Feed feature), or Foot #54 (for all models). Set the guide the desired measurement from the needle and align the outer edge with the seam, resulting in stitching that is parallel to the seam.



Centered Zipper

A good application for necklines, the process of inserting a centered zipper into a seam is easy to understand and simple to learn. The zipper is placed behind a basted seam and topstitched along each side. The basting is then removed to expose the zipper opening.

Machine Settings

- Straight stitch, various stitch lengths (see steps below)
- Reverse Pattern Foot #1/1C/1D (all-purpose foot)
- Zipper Foot #4/4D, 14/14D or Non-stick Zipper with Guide #54 (see previous page)
- Far right or far left needle position as needed (see below)

Step 1

Determine where the zipper will end and mark the ending spot. Sew the seam, using a straight stitch (2.5 mm length) from the marked spot down to the lower edge of the fabric. With Reverse Pattern Foot #1/1D/1D, sew the seam using a regular basting stitch (4-5 mm stitch length) from the marked spot up to the upper edge of the fabric. Press the seam open.

Step 2

Place the zipper face down on the seam allowances on the basted part of the seam, aligning the zipper coils with the seam; pin in place. *Note: The zipper can be secured with Wonder Tape, a ¼" double-sided adhesive that will not harm the sewing machine. The tape dissolves with the first wash.*

Step 3

Attach the selected zipper foot to the machine. *Note: If using a machine equipped with the Dual Feed function, Zipper Foot #4D is the best choice as it feeds the zipper and fabric under the needle with little or no shifting.*

Step 4

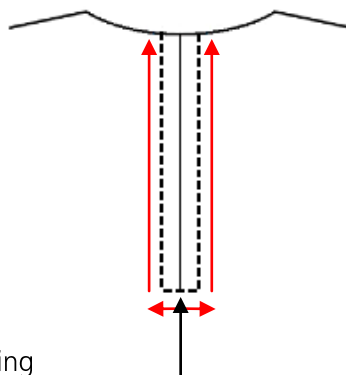
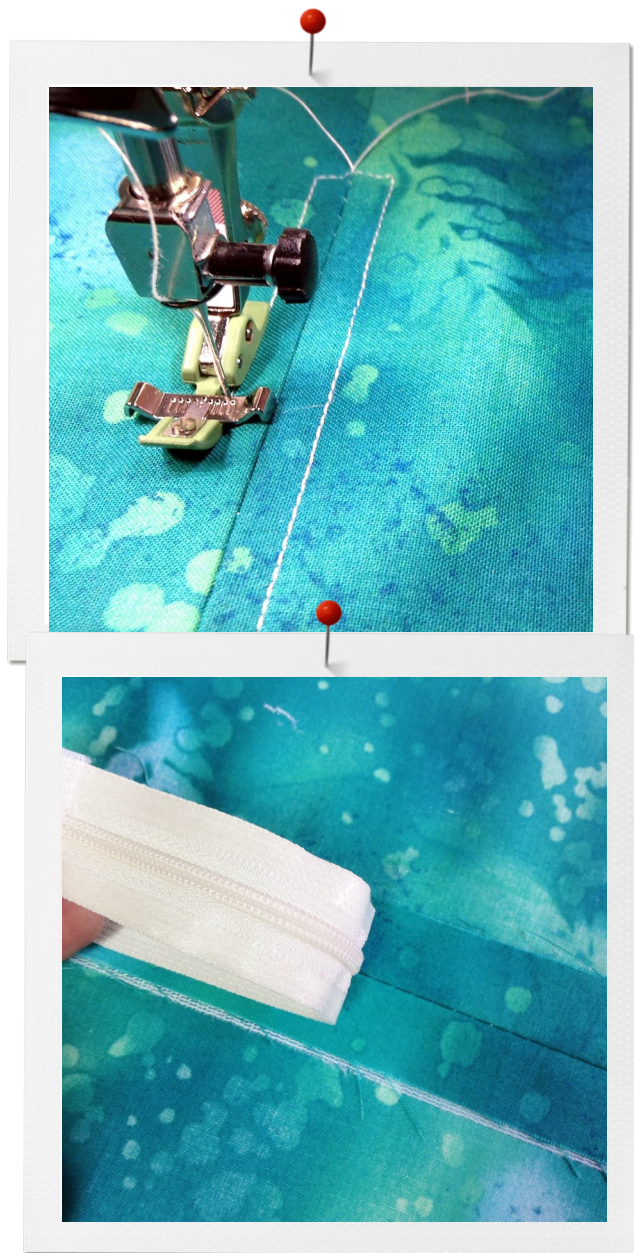
Place the fabric right side up under the foot, positioned to start sewing at the seam at the bottom of the zipper. Adjust the needle position (far right or far left) to stitch next to the coils. Starting at the seam, sew about ¼", then pivot and stitch to the upper edge of the fabric (see diagram right).

Step 5

Repeat for the remaining side of the zipper, adjusting the needle position as needed. Pull the starting threads to the back and tie.

Step 6

Remove the basting stitches. Finish the upper raw edge with facing, binding, hem, etc. suitable for the project.



Start here



Click for Video!

Try an alternative method of inserting a center zipper without basting!

Invisible Zipper

Called invisible, this zipper is stitched to the seam lines and is completely hidden once the zipper is closed. It looks like a seam when finished and the only part of the zipper that shows is the tab. This makes it the perfect closure for designer garments where an uninterrupted line is desired. *Note: The seam is not stitched until after the zipper is attached to the fabric pieces.*

Machine Settings

- Invisible Zipper Foot #35
- Zipper Foot #4/4D
- Straight stitch
- Center needle position
- Engage needle stop down

Step 1

Attach Invisible Zipper Foot #35 to the machine.

Step 2

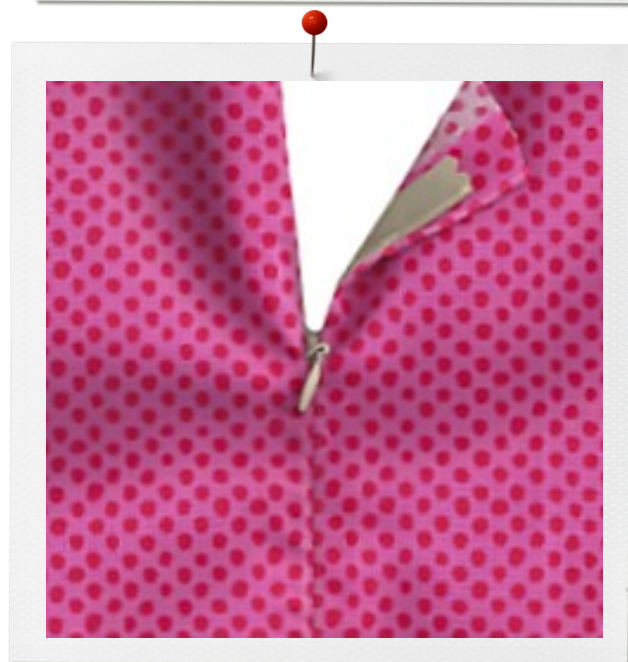
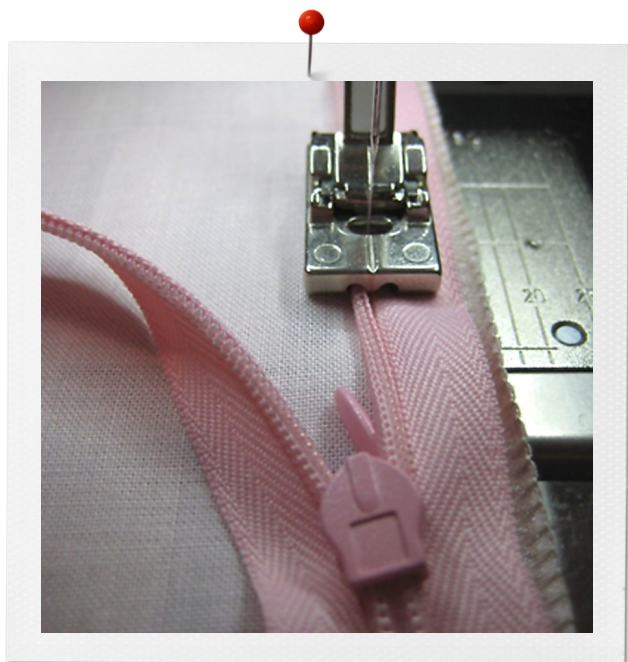
With right sides together, place the left zipper tape on the left fabric piece, so coil is on the seam line. Using center needle position, place coil in left groove of Invisible Zipper Foot #35. Sew until the foot reaches the zipper pull. *Note: Left refers to the zipper as it is seen in its finished state after being sewn. The order of stitching is not important – either right or left can be stitched first.*

Step 3

With right sides together, place the right zipper tape to the right fabric piece so that the coil is again on the seam line. Check that zipper is not twisted. Place the coil in the right groove of the foot and stitch as directed for the first side.

Step 4

Complete the seam below the zipper using Zipper Foot #4/4D. Zip the zipper to close the seam.



←
Click for Video!

Exposed Zipper

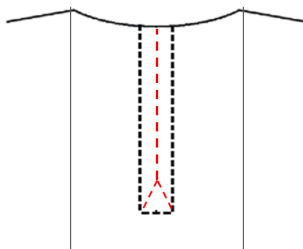
Used on casual clothing, sportswear, purses, and tote bags, this type of zipper application does not cover the coils of the zipper but leaves them exposed as part of the style of the project. The following directions are for a neckline zipper but this is also the process for a zippered pocket opening.

Machine Settings

- Non-Stick Zipper Foot with Guide #54
- Straight stitch, 2.5 mm stitch length
- Far right or left needle position as needed

Step 1

Mark a rectangular opening on the facing. The opening should be as long as the zipper and slightly wider than the coils. Stitch the edges of the rectangle as shown in black on the diagram. *Note: A pocket opening would be a closed rectangle.*



Step 2

Make a cut down the center of the opening, clipping into the corners as shown in red in the diagram above. Pull the facing to the wrong side of the garment fabric and press.

Step 3

Position the zipper behind the opening, centering the coils; pin the zipper to the fabric.

Step 4

Using Zipper Foot #14/14D, adjust the needle position to stitch next to the coils on each side and across the bottom.

Step 5

Once the zipper is stitched, finish the upper raw edge with facing, binding, hem, etc. suitable for the project.



← **Click for Video!**

See another exposed zipper stitched on the surface of the fabric.

