

QuiltMotion
Software

Triangles with a Twist

Created by Elaine Cibelli

Supplies

Machine & Accessories

- BERNINA Sewing Machine
- BERNINA Quilt Frame
- QuiltMotion (with Quilter's Creative Touch)
- Echo Quilting & CutWork Foot #44/44C

Notions

- *Served with a Twist* Pattern - Karie Patch Designs (or pattern of choice)
- Fabrics according to pattern. Sample: Nancy's Holidays Favorites by Benartex
- Yenmet Gold Thread



Piece the table runner and placemat according to the pattern instructions.

- Load the frame with the backing fabric, batting and finished table runner and placemats.

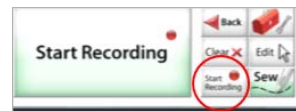
Recording a basting stitch using Quilt Motion



- Create a basting stitch that can be used over again on any size quilt
- Set the safe area.
- Move the machine so that the back of the main frame opening butts up against the take-up rail. Using that as the guide to keep the needle on a straight path, press **Start Recording** and slide the machine from the left side of the frame to the right. Quilt Motion is RECORDING not sewing. *If the line is not straight, press Clear and begin again.*



- When a straight line is created click on the SAVE icon > click on Patterns > create a New Folder and name it > Open the folder and SAVE as Basting Line.



Placing the basting line for sewing

Placement	Two Points
Fill Method	Stretch
Pattern Height	0
Pattern Width	12.584
Stitch Per Inch	10
Sew Speed	Slow

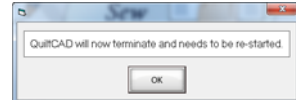
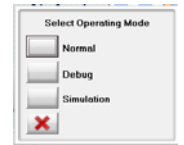
- When starting a new quilt, open the Basting Line as a pantograph.
- There are a variety of placement possibilities available within QuiltMotion to achieve perfect results. To access the options, click on the Sewing Settings area.
- For basting: Change the stitch length. This can be adjusted to 6 for a longer basting stitch. Change the Sewing Speed to Slow (the turtle).
- Set the Placement method to Two Points; the Fill Method to Stretch > OK
- Place the pattern and stitch on or within the 1/4" seam allowance



Simulation Mode

All of the pattern preparation can be done in Simulation Mode either on the Creative Touch Pad or on the Computer.

- To switch to Simulation Mode > press the D > S and P on the Home Page.
- When the dialog box appears press OK
- If you are working on the computer, the design can be transferred to a USB stick and brought to the touch pad later
- Click on the QuiltMotion Desktop icon to reopen > When asked to continue in Simulation Mode > click **YES**
- The little red 2 in the upper left corner designates Simulation Mode.



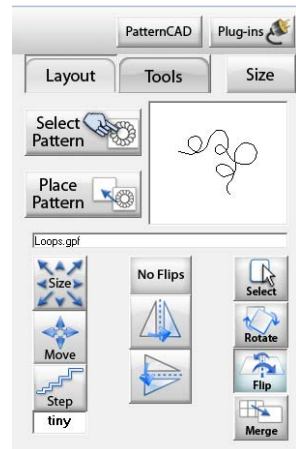
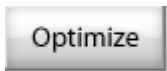
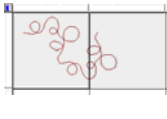
Combining a Pattern

Combine a pattern to create a pantograph. For the border of the table runner a corner pattern was combined and then a pantograph was created. The New Quilt Layout is used to combine the patterns.

- Start with the Home page > Design and Create > New Quilt
- When the default quilt opens > Select Pattern > Click on the Corner Tab > Select **Loops.gpf** > Open
- Select 2 blocks and place the patterns.
- Deselect the first block > select flip > select Flip on the horizontal plane.
- Select the MOVE icon > use the move left and move down arrows to connect the two patterns
- Select both blocks > Quilt.

The pattern is in two parts so when quilting, it will stop at the trim. The pattern can be Optimized and the Trim eliminated so the pattern will stitch continuously.

- Select Optimize to remove the trim.
- Select Check for Breaks and Animate Stitching to run through the pattern.
- Since there is only one Break or Trim, select **Remove all** > When the Pattern Break dialog box appears and asks if you wish to connect the first and last points - select **NO**. (If you select yes there will be an actual stitching line sewn from the first to the last point.) **OK**.
- The result of Optimization is one continuous pattern. At this point, **Save** the pattern. Click on the **Save Icon**.
- Click on the **Pattern Tab**
- Create a new project folder.
- Click **NEW** > type in the name for the folder: Triangle Twist > **OK**
- Click on the folder to open
- (NOTE: The path of where you are in the computer is on top)
- For the File Name type in Loops 1 and **SAVE**.



Editing the pattern in Pattern Cad

The design could be left as is and the pantograph created OR can be opened in Pattern Cad to smooth out the connection. Pattern Cad is the place to go for more creativity. Edit or create your own patterns.

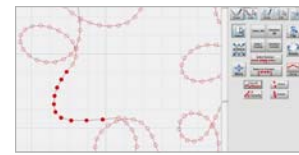
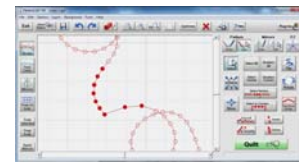
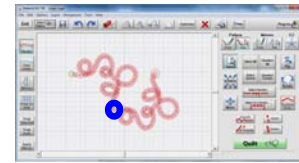
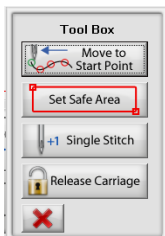
- EXIT and Return to the HOME Screen. (There is no need to save the Quilt - it was a vehicle for creating the combined pattern which has been saved.)
- In the Design and Create section > Select > New Pattern which will open up Pattern Cad.
- When Pattern Cad opens > click on Select Pattern > Navigate to > Patterns > Triangle Twist > select Loops 1 > OPEN
- When the Loops 1 pattern opens it shows all of the nodes (little red circles). Notice the angle where the two patterns were joined. It's pretty easy to round that out using the editing tools in Pattern Cad.
- Zoom in on that section by clicking the Zoom In icon
- Select the section by drawing a box encasing the nodes to be smoothed.
- Click on Smooth 2 x's.
- Click on Save and Save as > Loops 2 (using the same steps used before) This is the pattern used to create the pantograph.
- Exit
- When the reminder to save your pattern appears, click NO because it has already been saved.

Creating the Pantograph

- At the Home screen select New Pantograph. Open Loops 2.gpf
- Click in the Height number box and Set the Height to 4 and the Width to 41. Note the Limit Range on top of the dialog box.
- Select OK.
- Click in the Count number box and Change the Count to 7.
- Save the pattern as Loops Pantograph in the Triangle Twist folder.
- When ready to quilt, use a 4 Point Stretch Placement which will fill the border area more precisely.
- Pull the bobbin thread.
- Sew.

OOPS! Or what to do if the thread breaks or bobbin runs out.

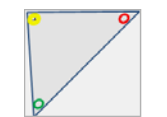
- Top thread breaks: Re-thread top thread.
- Select the Align Tab
- To travel back to the thread break there are several options. Move to the Closest Stitch, Trace backward and forward, and Trace back or forward 1 stitch at a time. If the needle doesn't look as though it is right over the last stitch it can be nudged. When position is correct > Pull Bobbin and begin to Sew
- Bobbin runs out: If the bobbin runs out click on the Toolbox touch Release Carriage and move the machine to the end of the frame to access the bobbin area.
- Return the machine to the area of the last stitch and touch Trace -1 to return to the last stitch. Adjust accordingly.



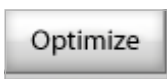
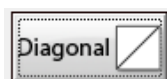
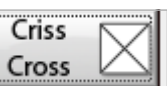
Twisting Triangles



Placement	Tilted Block
Fill Method	Stretch
Pattern Height	4.62
Pattern Width	10.082
Stitch Per Inch	10
Sew Speed	Slow



- Switch back from Simulation Mode to Stitching.
- Select Pattern on the Home Page > Select the Triangle tab and select bubble.gpf > Open.
- Set safe area by bringing machine to the top left hand corner of fabric area.
- Touch "Top Left" icon on screen. Continue setting safe area by bringing machine to the bottom right corner of fabric area. Touch "Bottom Right" icon on screen.
- Click on the Settings area to open the placement options.
- Select the tilted block and stretch. This will fill the triangle. Click on OK
- To help visualize how to place the pattern: Cut 2 paper triangles and mark the corners to show the start/stop and top points. This method is great to remember for any tilted block.
- One triangle can be placed on the quilt and the other near the touch screen.
- Place the paper triangle in the direction of the corner triangle to help with placement. *After a while you may not need the paper triangle as a visual aid, but it can be a very helpful tool.*
- Bring the machine needle to the triangle points of the table runner triangles following the start, stop and point placement. After placing the pattern in each of these points, pull the bobbin and sew.
- Repeat for the corner triangles rotating the paper template to replicate the position of the triangle.



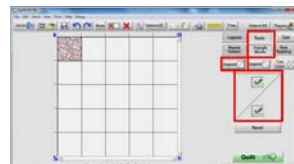
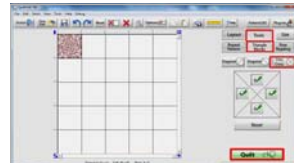
More Triangle Twists for the Placemat

Criss-Cross Triangle

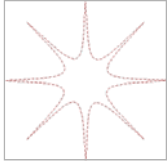
- Home Page > Select Quilt > At the Read Quilt Dialog Box click Cancel
- In Quilt Cad > Select Pattern > Select the triangle tab > bubbles.gpf > open
- Select a block > Place the pattern > select the Tools tab > In the tools tab select Triangle Blocks > Criss Cross > check all boxes.
- Change the placement method by clicking on the Settings box > Change the placement method to block > Four Point > Stretch > Place the pattern
- Change the Stitch Out type to Ditch. Stitch an outline around the block.
- Change the Stitch Out type to Pattern. Stitch the Criss-Cross Triangle pattern in the large area of the placemat.

Diagonal Triangle

- In the tools tab under Triangle Blocks > select Diagonal.
- Change the Stitch Out type to Ditch. Stitch an outline around the block.
- Change the Stitch Out type to Pattern. Stitch the Diagonal Triangle pattern.
- To remove the trim click on Optimize > the pattern is two separate units. Select Remove all and join the first and last stitch > OK.



Multi-Point Placement



Use Multi-Point Pattern Placement for Irregular shaped blocks or areas.

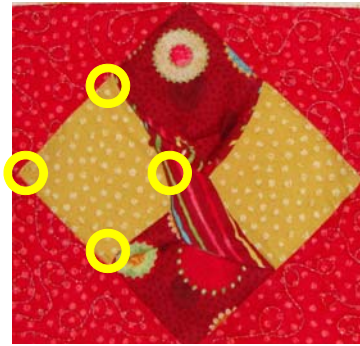
- Since the pattern will not be altered or edited, simply go to **Home Screen > Select and Sew** and choose the **Pattern**.
- Scroll down and select the pattern **starburst.gpf** and **Open**.



- Click on the **Settings** box to change the placement type > select **Multi-Point** and **Center**. Then press **OK**.



- Set the area to be quilted by **Adding Points** to the irregular shape.
- To adjust the placement use **Remove Last Point**.
- **Remove all points** to start again.



Placement	Multi-Point
Fill Method	Center
Pattern Height	4.62
Pattern Width	4.583
Stitch Per Inch	10
Sew Speed	Slow

Finishing Technique - BERNINA Binder Attachment

Finish the quilt using the BERNINA 38mm Binder Attachment #88 and foot #95C.

- The strips can be cut on the straight of grain or on the bias. Starch the fabric before cutting with Maryellen's Best Press. Cut strips 1 ½".
- Stitch to the edge of the quilted piece. Clip threads and swing the binder out.
- To miter the corners, fold the binding on the edge of the quilted piece and manipulate the miter. Pin the back corner of the miter with the pin head facing out and the top side with the pin head facing in.
- Replace the binding under the machine and place the needle in the inside corner. Then remove the pins and continue sewing.
- Finish by joining the ends or overlapping.



Visit www.bernina.com
Projects • Webinars • Promotions