

QuiltMotion Touch Straight Line Block

Created by Denise Jones

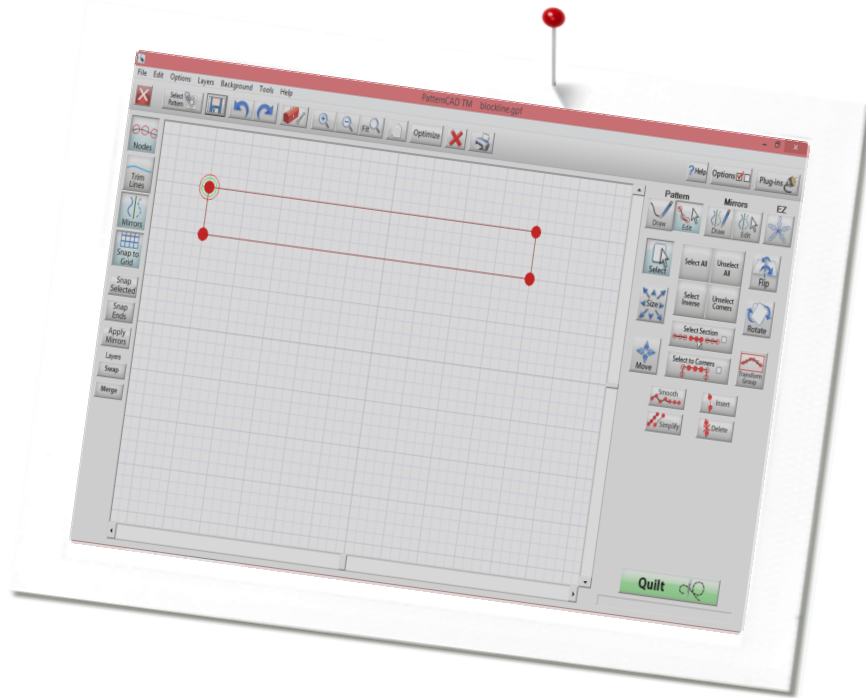
QuiltMotion Touch
for
BERNINA

Use QuiltMotion Touch for BERNINA to create a Straight Line Block in PatternCad to use with Quilt-As-You-Go and one of the newest features, PantoStacker.

Supplies

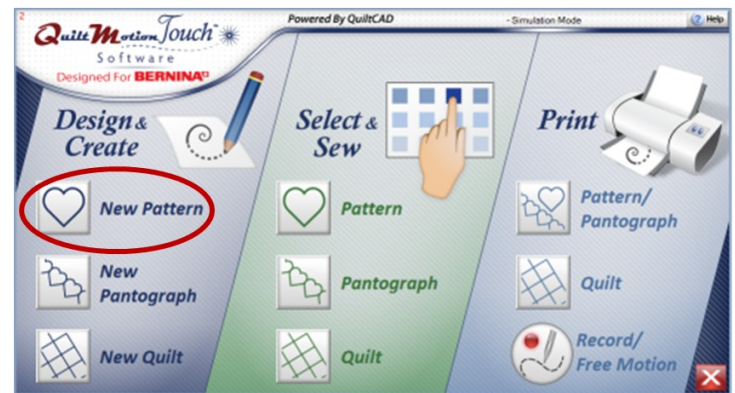
Machine & Accessories

- BERNINA 8 Series or 7 Series Sewing Machine
- BERNINA Quilting Frame
- QuiltMotion Touch for BERNINA

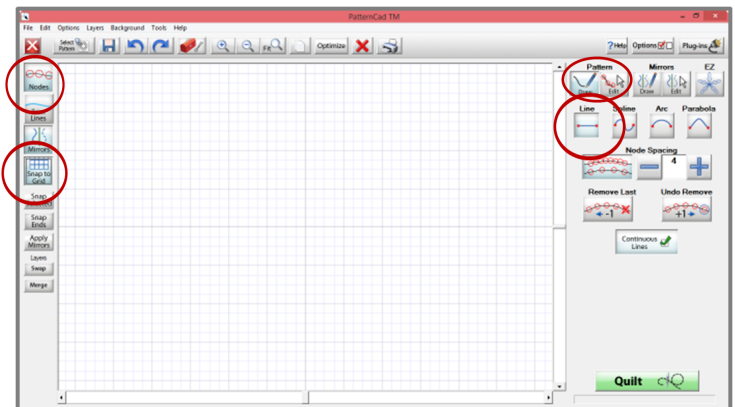


PatternCad

- Open QuiltMotion Touch.
- Under **Design & Create**, select **New Pattern**.

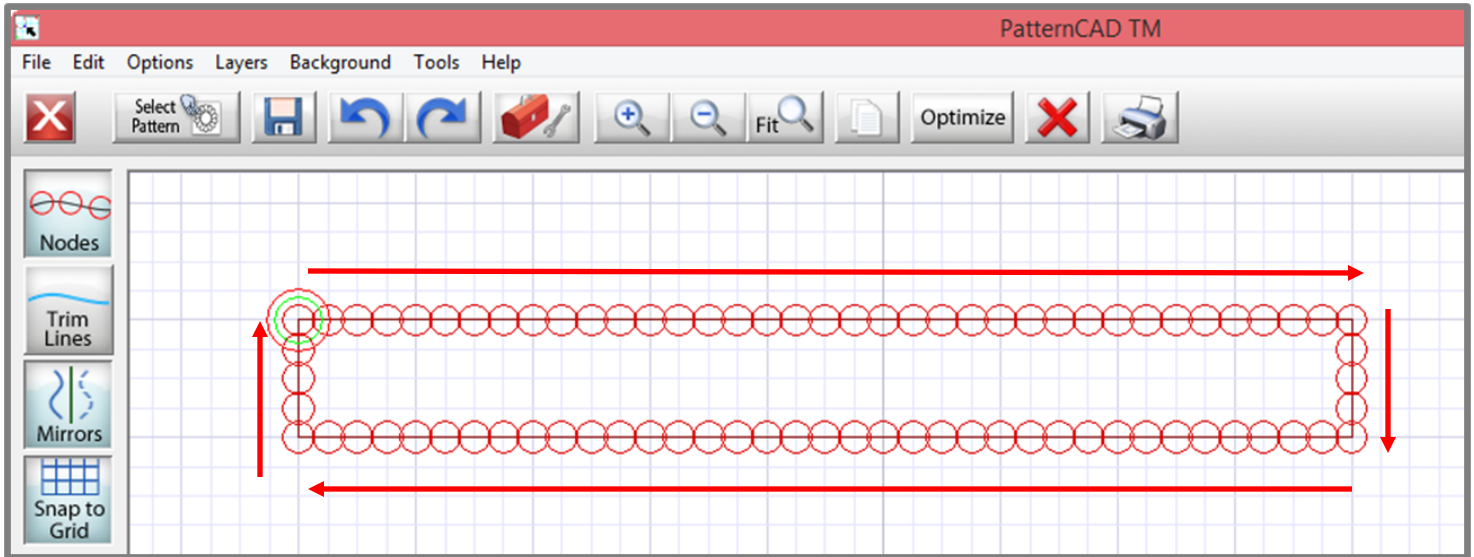


- This will open PatternCad.
- Select: **Nodes**, **Snap to Grid**, **Draw** under **Pattern**, then **Line**.

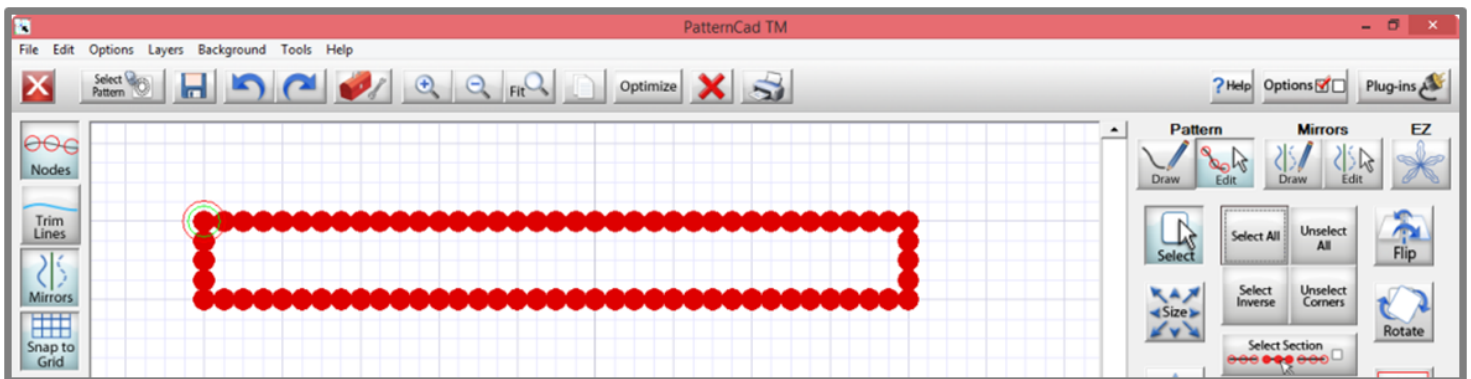


PatternCad continued

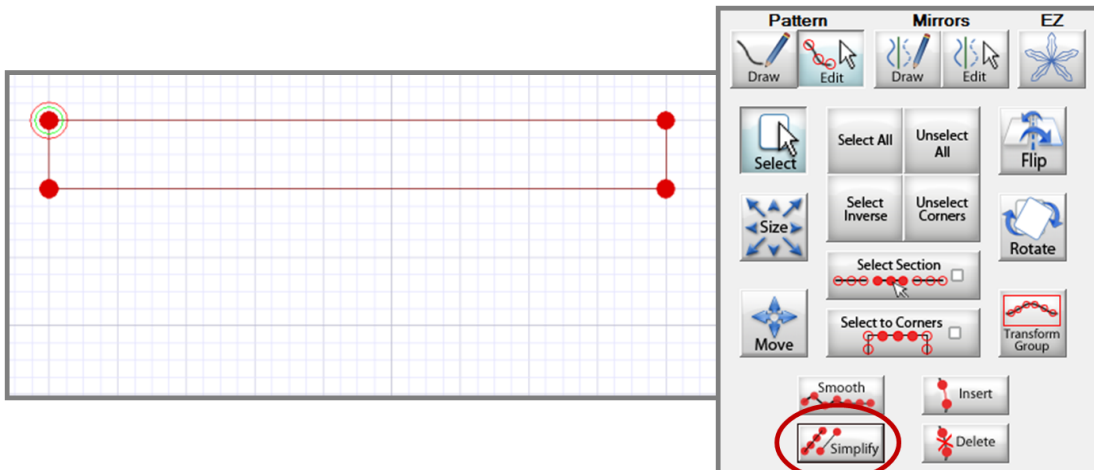
- Using the mouse and cursor, draw a block using four lines.



- Using the **Select All** in the tools on the right side of screen to select all **Nodes**.

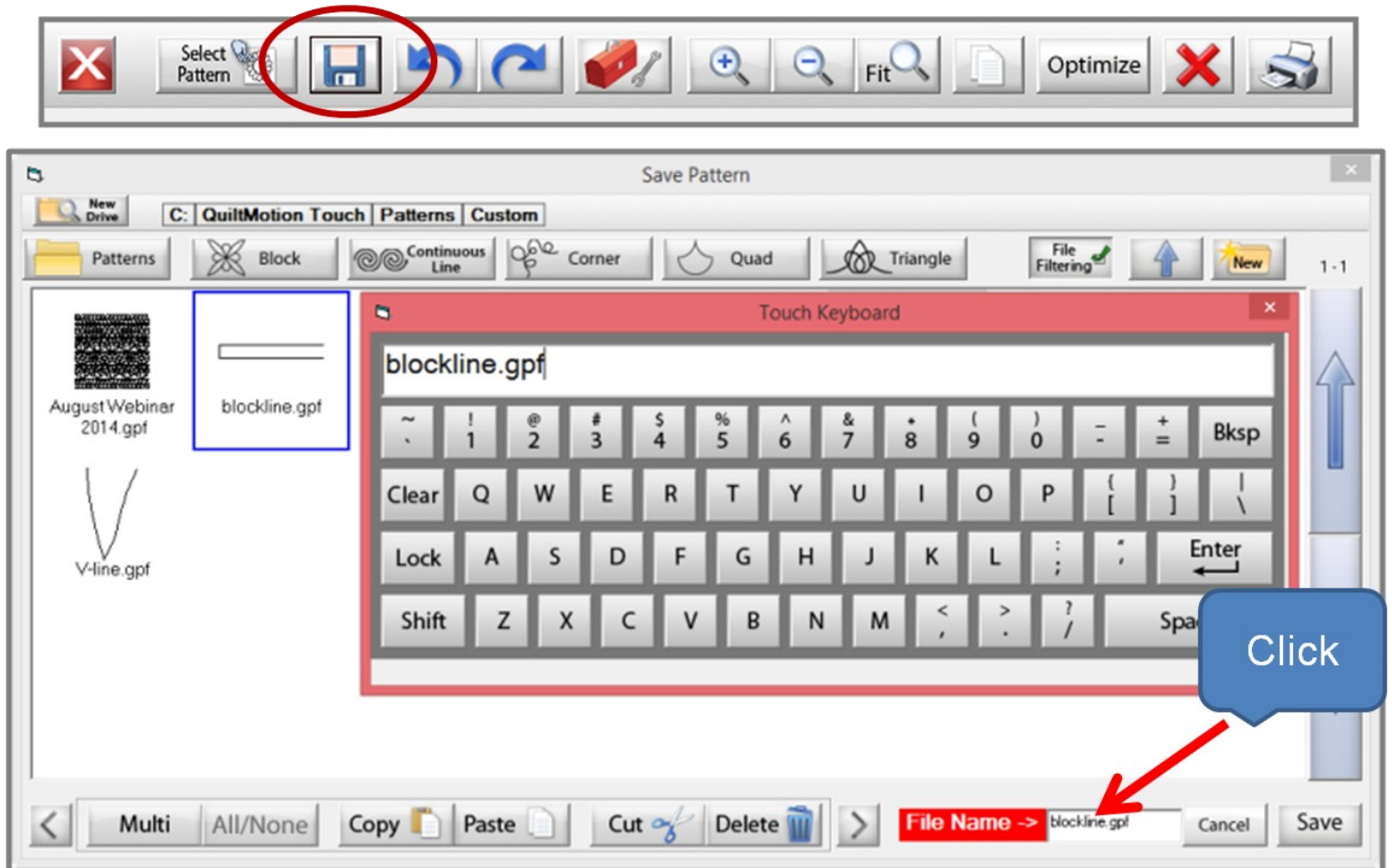


- With all nodes selected (red) click **Simplify**. The nodes that are not needed to maintain the design will be removed.



PatternCad continued

- Save and name the design on the Custom folder under Patterns.



Visit bernina.com

Projects • Webinars • Promotions