

QuiltMotion Touch for BERNINA

Font Stitcher with Virtual Long Arm

Created by Denise Jones

Use **QuiltMotion Touch for BERNINA** to create a design in **Font Stitcher**. The Font design can be used as a single design, in a Pantograph for all over quilting or in Virtual Long Arm.

Supplies

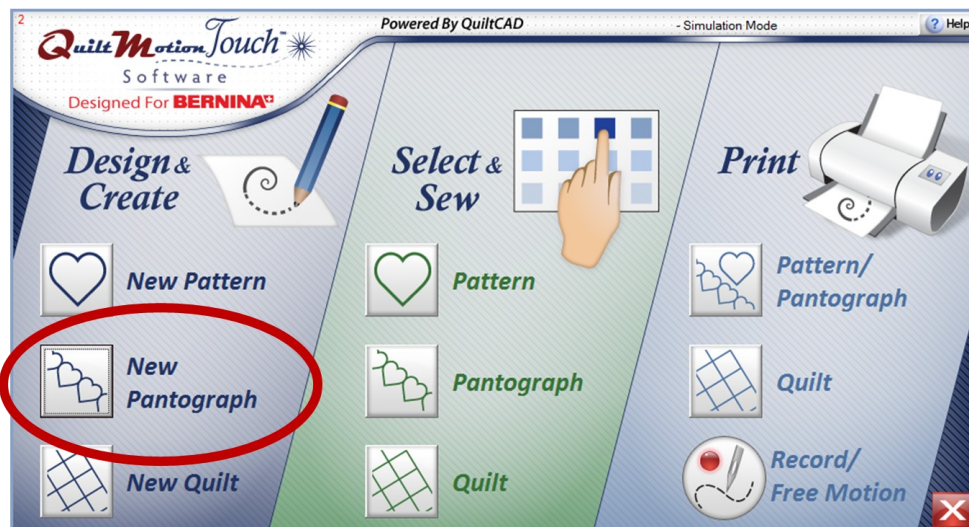
Machine & Accessories

- BERNINA 8 Series or 7 Series
- BERNINA Quilting Frame
- QuiltMotion Touch Software for BERNINA

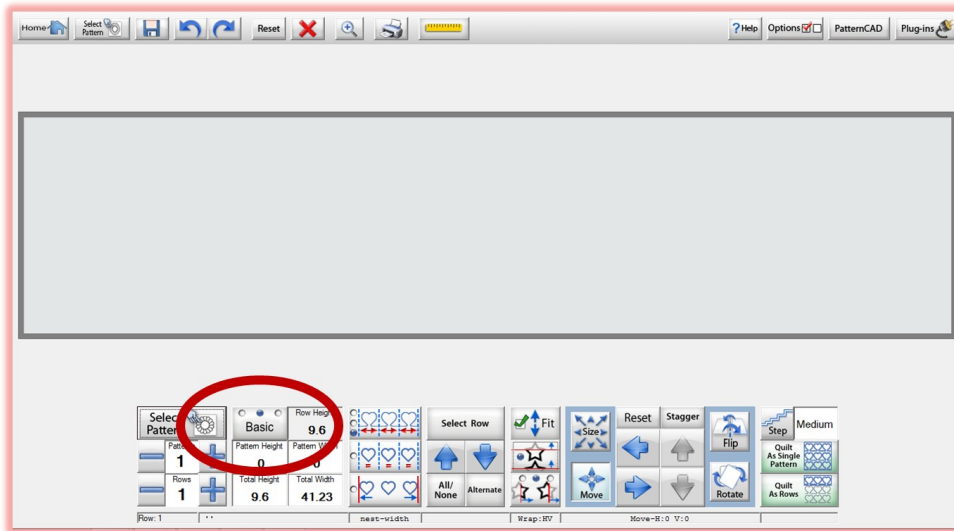


Font Stitcher

- Open QuiltMotion Touch and then click on “**New Pantograph**” under “**Design & Create**”



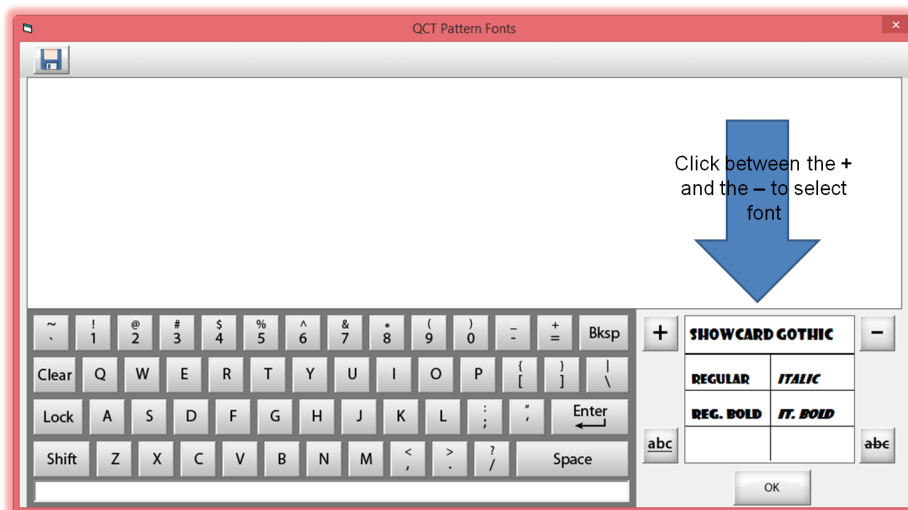
- When the screen opens make sure that you select “**Basic**” mode under the Pantograph modes.



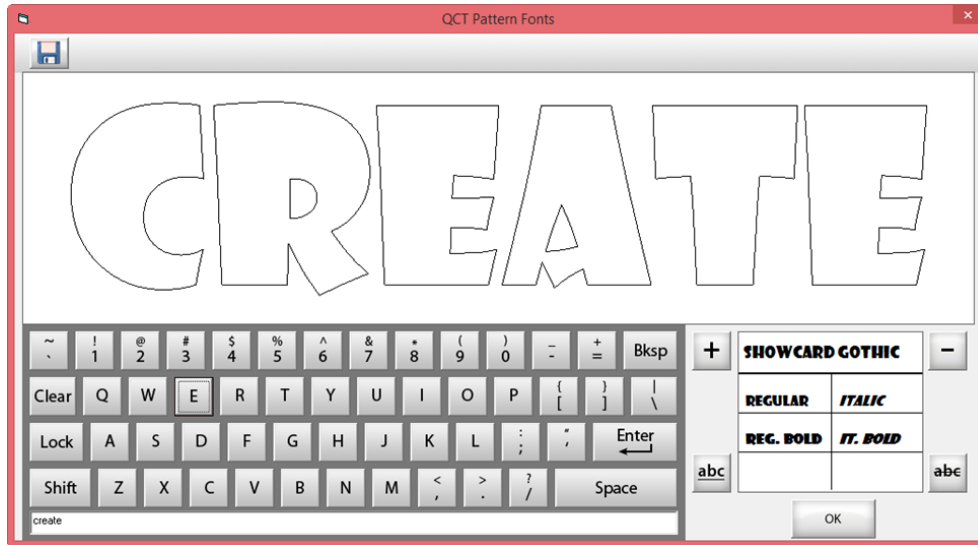
- From the upper right corner select “**Plug-ins**” and then select “**Fonts**”.



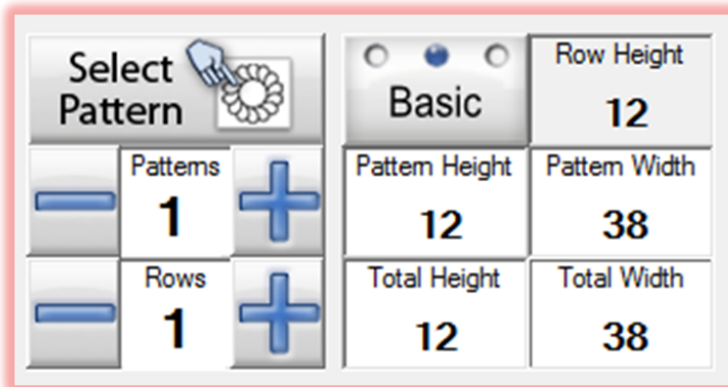
- Select your font of chose from the Font listing found between the + and the - on the right side of the screen.



- Type in the word you would like to quilt.
- When you like what you have click “OK”.



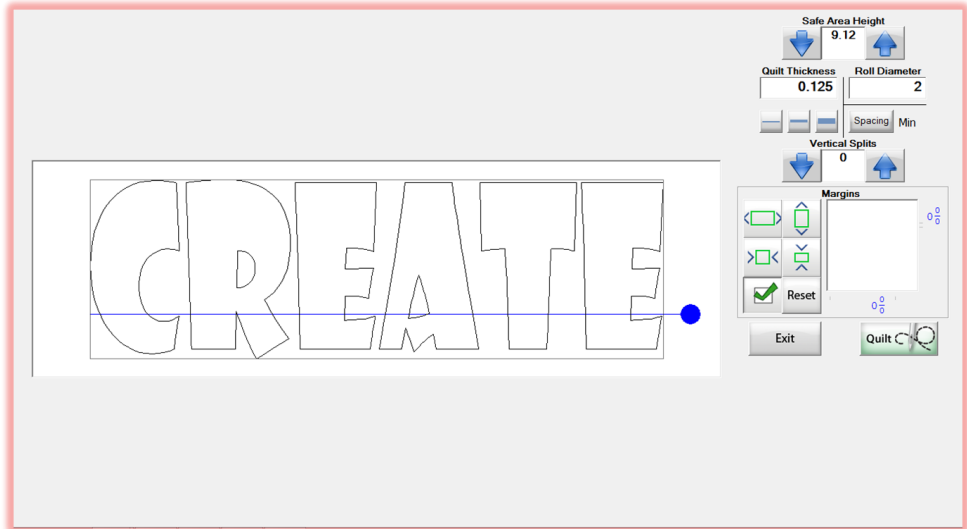
- When “OK” is clicked the dialog box will ask you to “Save” this file and you must do this to continue.
- Change the “Pattern Height”.
- Change the “Total Height”.
- Change the “Total Width”.
- If more than one repeat is needed enter that number under ”Patterns”.
- If more than on row is desired enter that number under “Rows”.



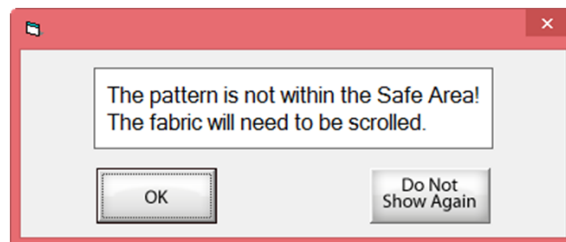
- From the “Plug-in” icon on the upper right corner select “Virtual Long Arm”.



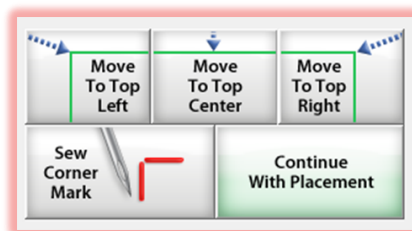
- Set “**Safe Area Height**”.
- Set “**Quilt Thickness**” to match batting being used (0.125 would be stranded cotton batting (Warm & Natural)).
- Set “**Roll Diameter**”. Bernina Quilt Frame has 2 inch rails.
- Adjust the **BLUE** split line to achieve the best results.
- Select “**Quilt**”.



- If the first row of your design needs to be “**Optimized**” now is the time.
- After optimizing and all looks good. Click “**Ok**”.
- Use **VLA Block Placement** and sew out.
- Stay close to click “**Move to Next**” and “**Sew**”.
- Click “**Finished Row! Place Next Row**”.
- Click **OK** to confirm that the next row is out of the **Safe Area** .

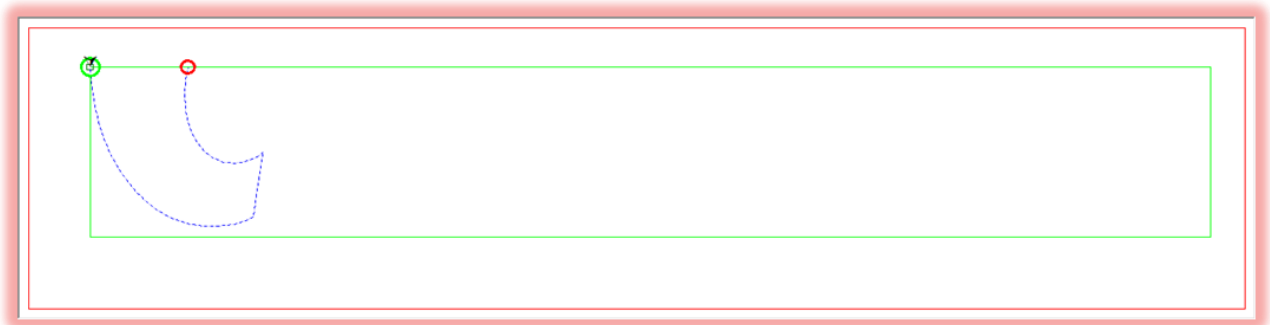


- Click “**Move To Top Left**” corner.
- Click “**Sew Corner Mark**”.
- Click “**Continue With Placement**” after the mark is sewn.



- Click “**Yes**” to confirm you have a mark to place not row section.
- “**Optimize**” if needed.
- Place the next section using the **VLA Point Placement** method.
- This method will be on the screen because the software will always give you the preferred placement depending on what you are placing but can be changed at anytime.

- Place the first stitch of the upper left to match the stitch that is already there.
- Change place method at this time to **VLA Precise Placement** and continue to place each segment as you go.
- Place with start and end point of each segment, follow the design map.



Visit bernina.com

Projects • Webinars • Promotions