

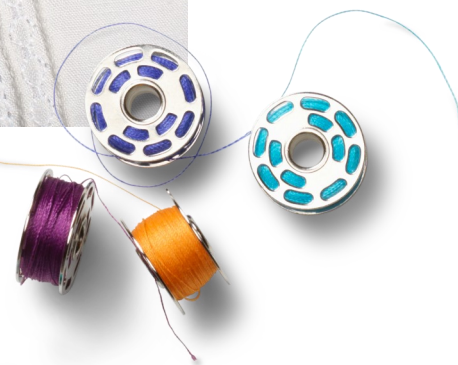
eBook  
SERIES

Just SEW It!  
**Pintuck  
Primer**

- ~ Presser Feet Options
- ~ Threading the Needles
- ~ Corded Pintucks
- ~ Pintucks + Stitches
- ~ Shaped Pintucks
- ~ Shadow Pintucks



© 2014 BERNINA of America



made to create **BERNINA**

# Double Needle Pintucks

Create beautiful texture on any fabric from denim to batiste by stitching raised tucks using a pintuck foot and a double needle. Pintucks can be made with or without a filler cord, depending on the fabric and the look desired. Once the machine is threaded with two spools of thread for a double needle, the sewing is simple. Just stitch as always and the foot will do the work.

The following stitch techniques are described on the following pages:

- Presser Feet Options
- Threading the Needles
- Corded Pintucks
- Pintucks + Stitches
- Shaped Pintucks
- Shadow Pintucks



## Presser Feet Options

### Presser Feet

These are the four BERNINA pintuck presser feet. Each one has grooves on the sole that helps pull the fabric up to form a tuck. The differences in these presser feet are the size and number of grooves, resulting in various sizes of pintucks. These feet are designed to be used with double needles that correspond to the size of the grooves on the sole.

Presser Foot	Needle	Fabrics
3-groove Pintuck Foot #30	Double Needle 4.0mm	Heavy fabric
5-groove Pintuck Foot #31	Double Needle 3.0mm	Medium to heavy weight fabrics
7-groove Pintuck Foot #32	Double Needle 2.0mm	Light to medium weight fabrics
9-groove Pintuck Foot #33	Double Needle 1.6.0mm	Very delicate fabric

An additional BERNINA presser foot for sewing pintucks has a clear sole and is designed for sewing pintucks that are spaced 9mm apart so that decorative stitches can be added between the tucks. Pintuck and Decorative Stitch Foot #46C is a coded foot designed to work with all BERNINA models, those with a 5.5mm stitch width and those with a 9mm stitch width. The sole is clear so the stitching area is visible for accurate stitching. A 3mm Double Needle works best with Foot #46C.



3-groove Pintuck Foot #30  
5-groove Pintuck Foot #31  
7-groove Pintuck Foot #32  
9-groove Pintuck Foot #33



Pintuck and Decorative  
Stitch Foot #46C



Click for Video!

# Threading the Needles

Using two spools of thread and a double needle requires a slightly different threading method for the sewing machine. Most machines have two spool pins to accommodate the two threads but a thread stand placed behind the machine can also be used for the second spool.

## Two Spool Threading

The threads can be held together and threaded as one; they will follow the same path as for single needle sewing with two exceptions:

1. When the threads are placed in the tension disc, separate them and place one on each side of the disc.
2. As the threads follow the path and come down to the needle, separate them again and place one in the last guide before the needle, leaving the second thread to bypass it. This helps the threads keep from tangling while sewing.

Note: 8-Series machines must be threaded manually when using a double needle (see owner's manual for specifics).

## Tips

When beginning to stitch, bring the bobbin thread up to the top of the fabric by pressing the heel of the foot control or turning the hand wheel.

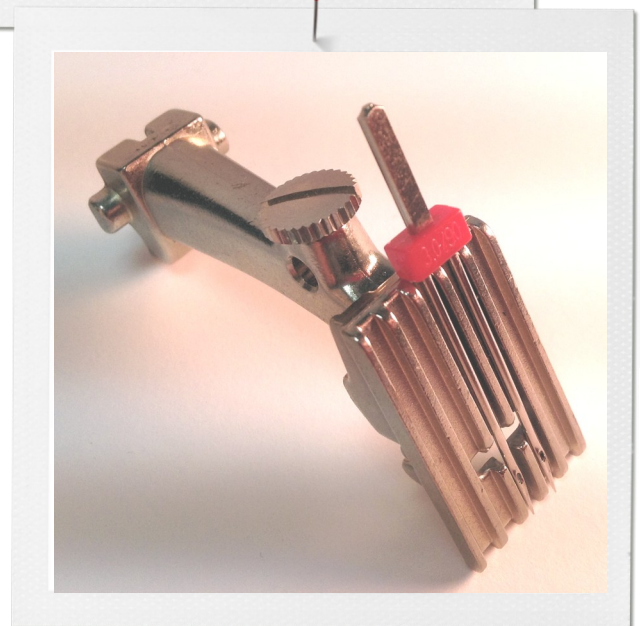
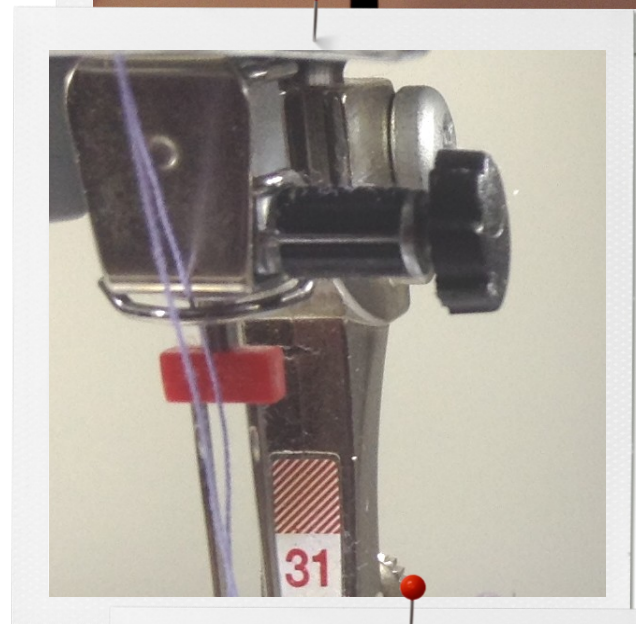
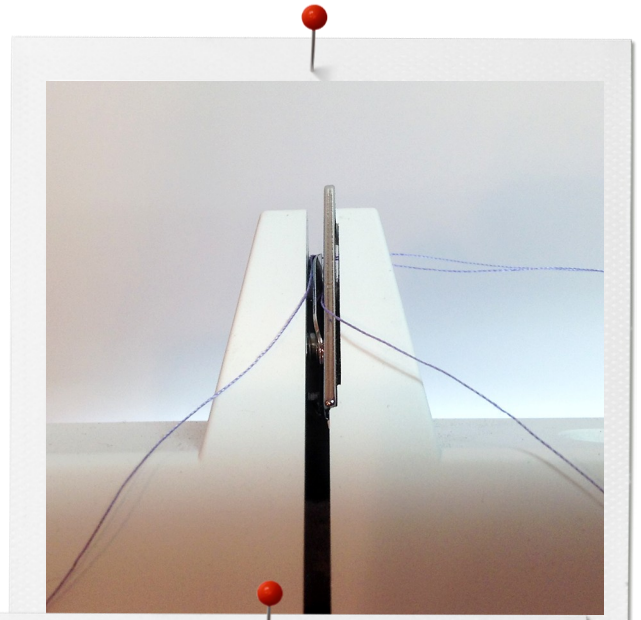
For more defined pintucks, slightly tighten the needle tension or shorten the stitch length.

Stabilizer may be needed but be aware that the stiffer the fabric, the flatter the pintucks may be.

Reduce the motor speed of the machine and sew slowly for best results.

## Tip

To determine if a double needle will work with the selected presser foot, place it against the sole of the foot. The needles should lay side-by-side in two adjacent grooves.



# Corded Pintucks

Cording offers structure and body to pintucks and is often used with all but the most delicate of fabrics. Experiment with narrow cords such as crochet cotton, gimp cord, embroidery floss, and perle cotton. If the project is to be washed, pre-shrink the cord by putting it in hot water and then let it dry.

## Machine Settings

- Pintuck Foot #30, #31, #32, or #33 as desired
- Double Needle to fit the selected presser foot
- Straight Stitch at default settings
- Needle Stop Down

## Step 1

Insert the selected double needle into the machine. If the machine has a Security function, select the width of double needle being used; this will restrict the stitch width so the needle doesn't strike the foot and break.

## Step 2

Thread the machine using two spools of thread, following the directions on the previous page.

## Step 3

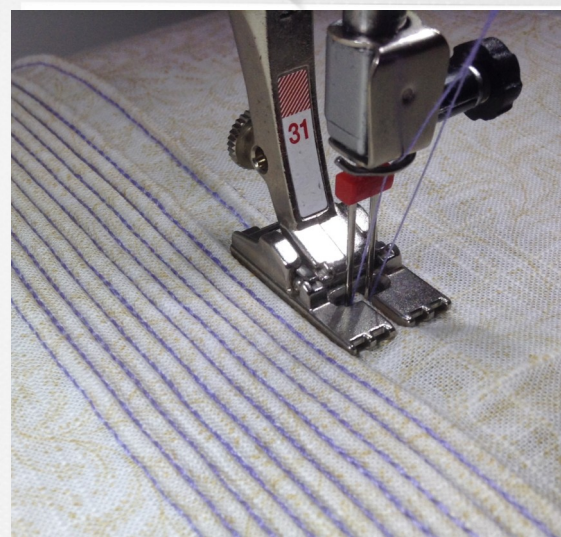
Attach the cording attachment to the bed of the machine according to the directions included with it. Load selected cord and make sure it flows freely as you sew. You can put the cord in your lap, set it in a jar or dish next to your machine, or slide it onto the Free Hand system if your machine has one. As the machine stitches the pintuck, it encloses the cord in the stitching, incorporating it into the pintuck.

## Step 4

Press the heel of the foot control or use the handwheel to bring the bobbin thread up to the surface of the fabric.

## Step 5

Stitch, sewing slowly, using the grooves for spacing and precision. For closely-spaced pintucks, place the first pintuck in the groove next to the center one; the second pintuck will be stitched right next to the first. For more widely-spaced pintucks, use the outer grooves or the edge of the foot for spacing. Continue stitching as desired.



# Pintucks + Stitches

Combine pintucks and decorative stitches to create a beautiful accent for custom made projects such as blouses, purses, and children's clothing. Pintuck & Decorative Stitch Foot #46C is designed to sew widely spaced corded pintucks, and then sew decorative stitches to fill the spaces between them.

## Machine Settings

- Pintuck and Decorative Stitch Foot #46C
- 3.0 mm Double Needle
- #80 Universal or Sharp Needle
- Size 100 or 110 Wing needle
- Straight Stitch at default settings
- Needle Stop Down

## Step 1

Insert the selected double needle into the machine. If the machine has a Security function, select the width of double needle being used; this will restrict the stitch width so the needle doesn't strike the foot and break.

## Step 2

Thread the machine using two spools of thread, following the previous directions. Attach cording attachment to the bed of the machine according to the directions included with it. Load the selected cord and make sure it flows freely as you sew (see first photo on previous page).

## Step 3

Mark a line on the fabric for the first pintuck. Following the line, stitch the first pintuck.

## Step 4

Position the pintuck in one of the grooves to get the desired spacing. Stitch a second pintuck.

## Step 5

Continue repositioning foot and aligning the pintucks in the groove until the desired number of pintucks are sewn.

## Step 6

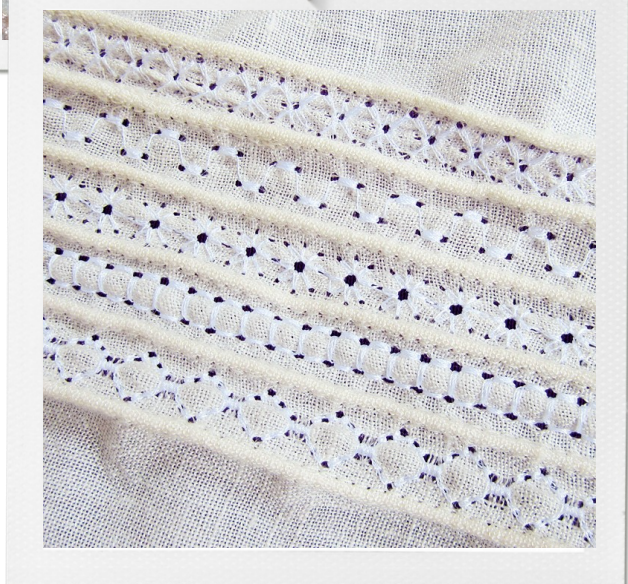
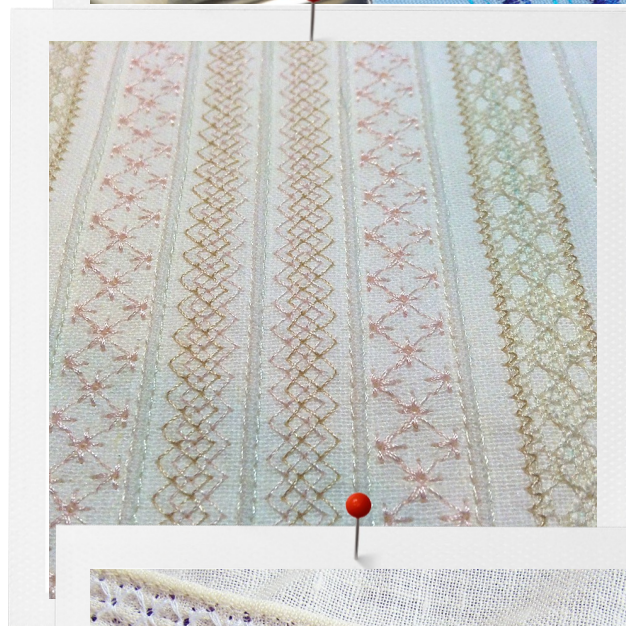
Replace double needle with single; thread machine with embroidery thread. Place 1-2 layers of Tear-Away stabilizer behind the fabric.

## Step 7

Select desired decorative stitch(es); sew between the pintucks, keeping the pintucks in the grooves on the sole of the foot while sewing.

## Tip

Use a wing needle for the decorative stitches if sewing on a natural fiber. The large "wings" on the needle will force the fibers open, creating embroidered, decorative holes.



# Shaped Pintucks

Traditional pintucks are usually stitched in straight lines, parallel tucks next to each other or spaced as desired using the grooves on the sole of the foot. They can also be stitched with random spacing in curved lines and turning corners. Stitch new pintucks over previously stitched ones to form a crosshatch or grid design.

## Machine Settings

- Decorative Stitch Foot #46C or Pintuck Foot #30, #31, #32, or #33 as desired
- Double Needle to fit the selected presser foot
- Straight Stitch
- Needle Stop Down

## Step 1

Set up and thread the machine for double needle stitching as described on the previous pages.

## Step 2

Select one or more of the methods below to create "shaped" pintucks.

### *Curved Pintucks*

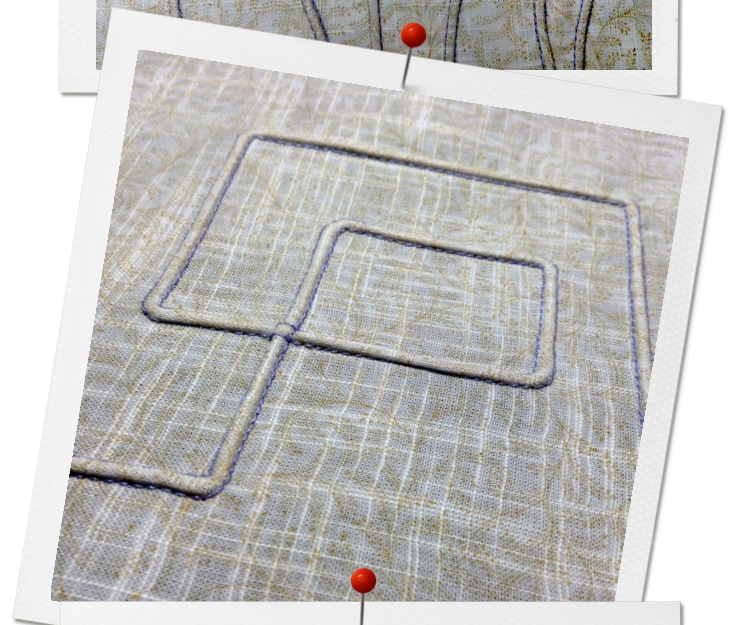
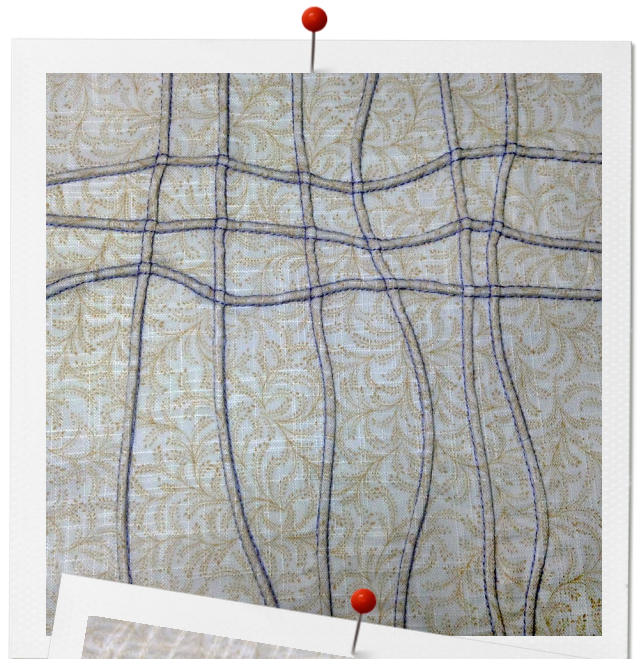
Stitch, moving the foot across the fabric to form gently curved pintucks. Use the grooves for parallel spacing or create random curves with random spacing as shown above.

### *Cornered Pintucks*

Stitch to the corner. Raise needles until the points are barely in the fabric, lift foot and turn 45°. Complete the stitch (press the heel of the foot control or use hand-wheel) and turn another 45°; continue sewing.

### *Grid Pintucks*

Sew equally spaced pintucks across the fabric as desired. Sew a second set in the opposite direction to form a grid. Make a square grid by sewing vertical and horizontal lines; sew a diamond grid by sewing on the diagonal in opposite directions. For easy spacing, use a seam guide attached to the foot.



# Shadow Pintucks

The secret to shadow pintucks is using a lightweight to sheer fabric and a strongly colored cord. The color shows through the fabric for a muted accent to the texture of the pintucks.

## Machine Settings

- Decorative Stitch Foot #46C or Pintuck Foot #30, #31, #32, or #33 as desired
- Double Needle to fit the selected presser foot
- Straight Stitch at default settings
- Needle Stop Down

## Step 1

Set up and thread the machine for double needle stitching as described on the previous pages.

## Step 2

Attach cording attachment to the bed of the machine according to the directions included with it. Load the attachment with a cord that is several shades darker than the desired final shade.

## Step 3

Stitch the pintucks as desired following the directions on the previous pages.

