

eBook  
SERIES

Just SEW It!  
**Sewing  
Circles**



© 2014 BERNINA of America

- ~ Circular Embroidery Attachment
- ~ Simple Circles
- ~ Fancy Circles
- ~ Circular Applique
- ~ Technique Circles
- ~ Circular Lettering

# Round and Round

Sewing machines are made to sew in a straight line. The combination of feeding system, presser foot, and the precision of the machine design determine how straight that line will be. For stitches sewn in a circle, the stitcher's skills are challenged to guide the fabric in a way that produces an exact, smooth curve that meets in a continuous line. This is almost impossible even for the most experienced sewer.

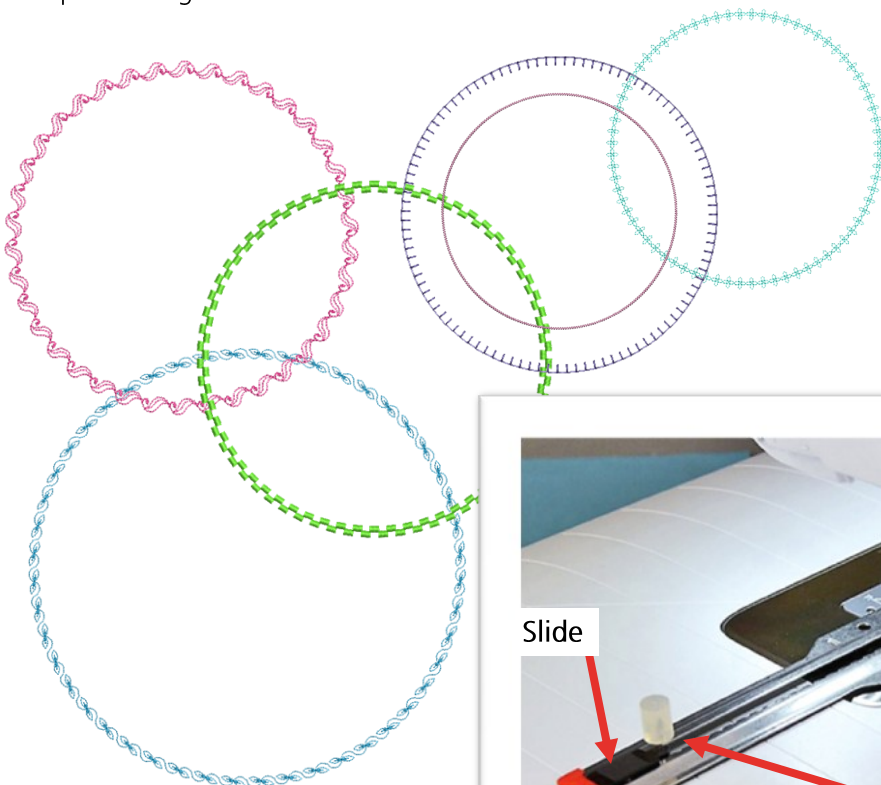
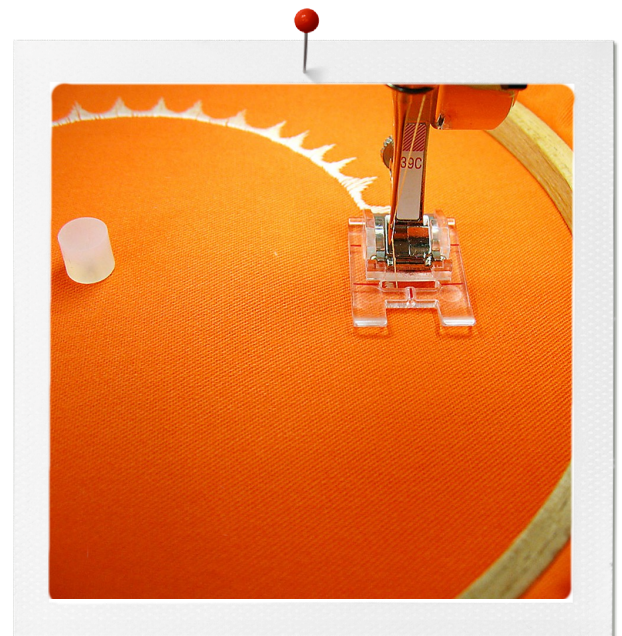
The following stitch techniques are described on the following pages:

- Circular Embroidery Attachment
- Basic Circles
- Fancy Circles
- Circular Appliqué
- Technique Circles
- Circular Lettering



## Circular Attachment

Attaching the Circular Embroidery Attachment is a simple matter of tightening one screw. It secures to the bed of the machine and can be oriented to the left or right of the needle. Align the hole on the attachment with the inner hole on the bed of your machine; screw in place. The attachment comes with an extra screw (total of two) and a special small screwdriver that fits the screw and is easy to use after positioning the attachment on the machine.



# Basic Circles

Simple circles sewn with a straight stitch are the easiest and fastest circles to stitch. They can be used as design elements, quilting motifs and as the basis of circular appliqué. Stitching a basic circle requires the same setup and preparation as more complex circles.

## Machine Settings

- All-purpose presser foot such as Reverse Pattern Foot #1/1C/1D or Clear Foot #34/34C/34D
- Cotton or polyester sewing thread
- Straight stitch with center needle position
- Needle Stop Down

## Step 1

Attach the Circular Embroidery Attachment to the machine according to the directions included in the box.

## Step 2

Using the black tab, slide the pin to make the desired size circle. Circles from 1½" to 10½" in diameter can be stitched with the BERNINA Circular Embroidery Attachment #83.

*Note: Keep the rubber stopper on the pin until ready to secure the fabric; the pin is very sharp and needs to be handled with care.*

## Step 3

Firmly stabilize the fabric with interfacing, batting and/or embroidery stabilizer so it will turn smoothly on the pin. Test a sample to make sure the fabric is stabilized enough to turn smoothly on the pin.

## Step 4

Determine the placement of the *center* of the desired circle; mark it on the fabric. Remove the stopper from the pin and place the marked point on the pin, pressing the layers down to the bed of the machine. Replace the rubber stopper.

*Note: When replacing the stopper after the fabric has been attached, push down so the fabric is secured, but not so much that the fabric will not be able to move.*

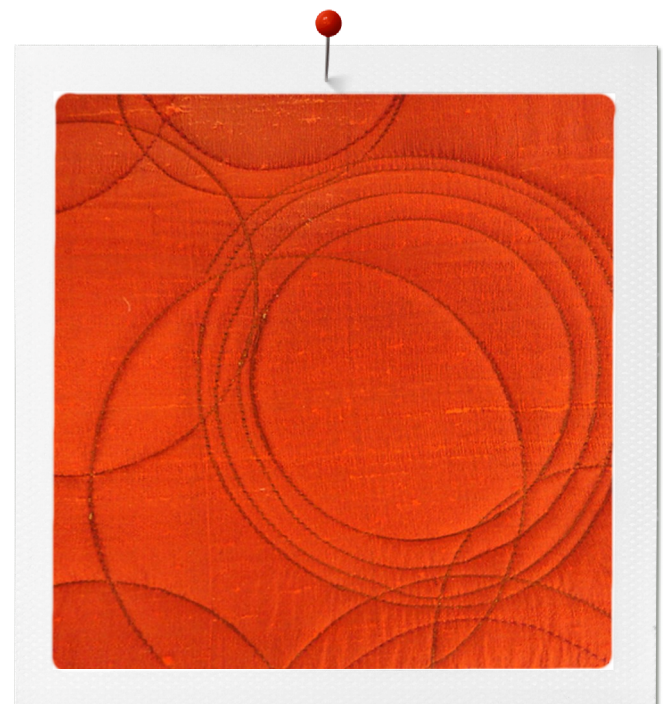
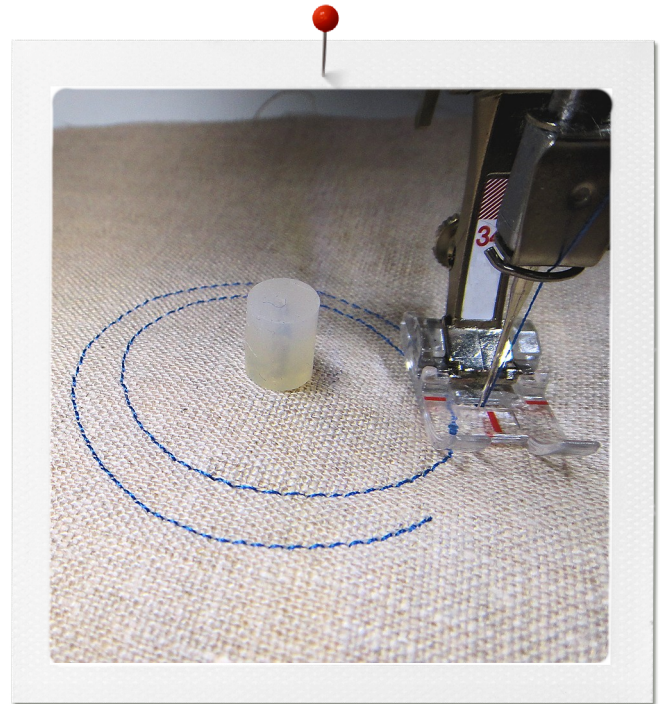
## Step 5

Attach the selected presser foot to the machine; lower the foot and begin sewing. The fabric will move around the pin to form a stitched circle. Continue stitching until the circle is complete. Secure the ends by backstitching, overlapping the stitching, or pulling the threads to the back.

## Tips

If the machine is not in a cabinet, use the slide-on table of the machine for support.

Make sure the fabric can turn easily without being inhibited by the side of the machine. Roll up the edges of the fabric and pin them if needed.



# Fancy Circles

Almost any stitch can be used to sew circles using the BERNINA Circular Embroidery Attachment. The process is essentially the same as when sewing straight stitch circles with a bit more attention paid to matching the patterns.

## Machine Settings

- Presser foot appropriate for the selected decorative stitch, such as Open Embroidery Foot #20/20C/20D or Clear Embroidery Foot #39/39C.
- Cotton or polyester embroidery thread
- Desired decorative stitch
- Needle Stop Down

## Step 1

Attach the Circular Embroidery Attachment to the machine according to the directions included in the box.

## Step 2

Using the black tab, slide the pin to make the desired size circle. *Note: When sewing decorative stitches, slide the tack to an odd setting (1st notch, 3rd notch, etc.); the patterns are more likely to fit evenly using an odd setting; it's not guaranteed but is amazingly consistent.*

## Step 3

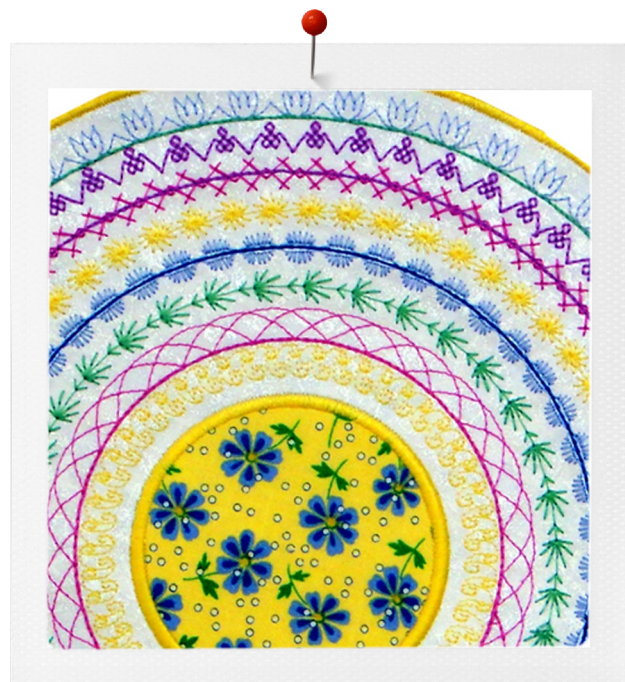
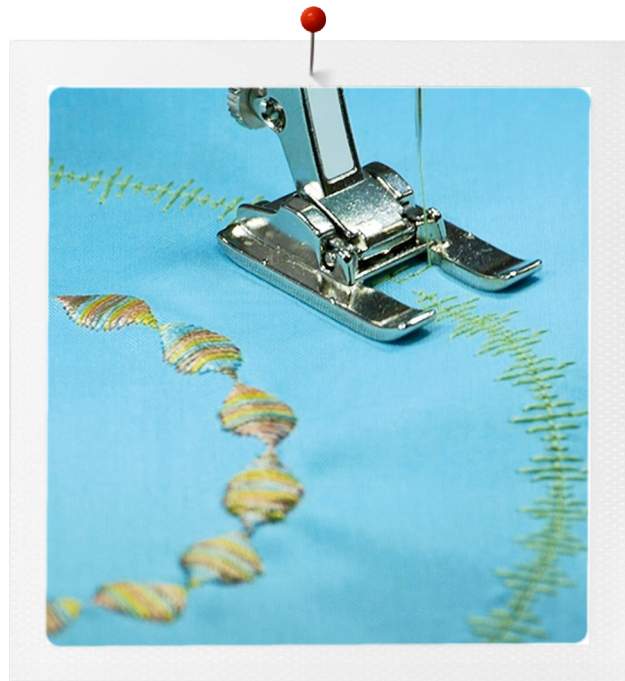
Firmly stabilize the fabric so it will turn smoothly on the pin. Test a sample to make sure the fabric is stabilized enough to turn smoothly on the pin.

## Step 4

Determine the placement of the *center* of the desired circle; mark it on the fabric. Remove the stopper from the pin and place the marked point on the pin, pressing the layers down to the bed of the machine. Replace the rubber stopper.

## Step 5

Attach the selected presser foot to the machine; lower the foot and begin sewing. To match patterns as you complete a circle, engage the Pattern End function when nearing the end. Use Balance (+/-) and/or Stitch Length to adjust the size of the last pattern to fit in the remaining space.



Click for Video!

# Circular Appliqué

Create circular appliqué designs with a 2-step process. First stitch a straight stitch circle on a swatch of fabric, sewing it to a background fabric, then trimming away the excess. The straight stitch is then covered by a satin or other decorative stitch to finish the appliqué.

## Machine Settings

- Presser foot appropriate for the appliqué, such as Open Embroidery Foot #20/20C/20D or Clear Applique Foot #23, or Clear Embroidery Foot #39/39C.
- Cotton or polyester embroidery thread
- Desired decorative stitch
- Needle Stop Down

## Step 1

Attach the Circular Embroidery Attachment to the machine according to the directions included in the box.

## Step 2

Using the black tab, slide the pin to make the desired size circle.

## Step 3

Firmly stabilize the background fabric so it will turn smoothly on the pin. Test a sample to make sure the fabric is stabilized enough to turn smoothly on the pin.

## Step 4

Determine the placement of the *center* of the desired circle; mark it on the background fabric. Remove the stopper from the pin and place the marked point on the pin, pressing the layers down to the bed of the machine.

## Step 5

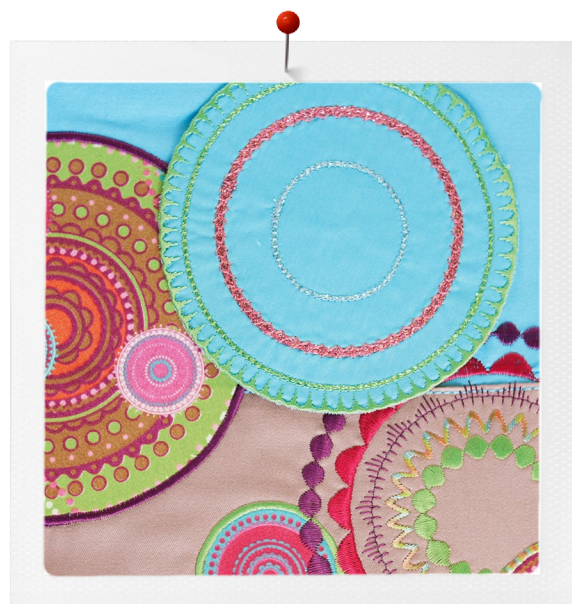
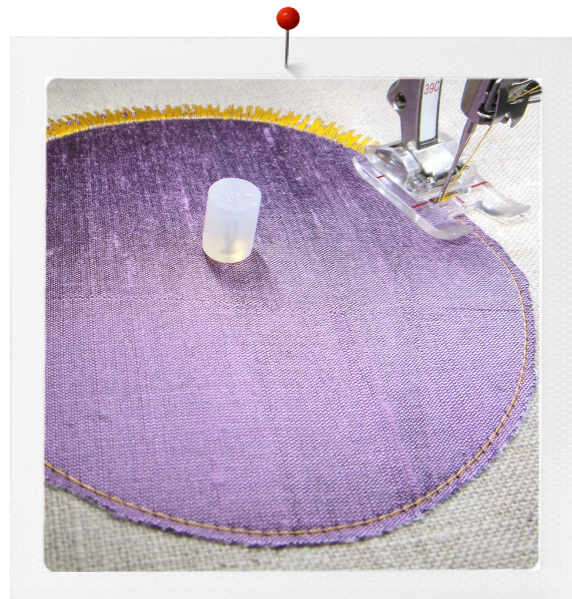
Cut a swatch of fabric for the appliqué slightly larger than the circle being stitched. Place the center of the square on the pin, right side up.

## Step 6

Select the straight stitch. Attach the selected presser foot to the machine; lower the foot and begin sewing. After completing the circle, trim around the outside of the circle.

## Step 7

Select a satin stitch or other decorative stitch and sew over the straight stitch edge of the circle.



# Technique Circles

The BERNINA Circular Attachment #83 can be used with almost any stitch, any presser foot, and any technique. Set up the machine the same as for stitching the selected technique in a straight line. Use the same presser as if sewing the chosen stitch or technique in a straight line. Stitch in exactly the same way; the attachment does the work for you.

## Fabric Prep

Firmly stabilize the fabric so it will turn smoothly on the pin. Test a sample to make sure the fabric is stabilized enough to turn smoothly on the pin.

## Couching

- Attach selected presser foot to the machine (Embroidery Foot #6, Braiding Foot #21, Cording Foot #22 or #25, Clear Embroidery Foot #39/39C).
- Load the foot with desired fiber, yarn, or cord in foot.
- Select zigzag or other decorative stitch as desired.
- Determine the placement of the *center* of the desired circle; mark it on the fabric. Remove the stopper from the pin and place the marked point on the pin, pressing the layers down to the bed of the machine. Replace the rubber stopper.
- Stitch over cord or fibers, sewing complete or partial circles as desired.

[Click Here to download ABCs of Couching eBook.](#)

## Pintucks

- Attach selected pintuck foot to the machine (Pintuck Foot #30, #31, #32, #33 or #46C).
- Insert a double needle into the machine. Width of double needle should correspond with grooves of sole of foot.
- Thread the machine for double needle stitching.
- Select straight stitch.
- Determine the placement of the *center* of the desired circle; mark it on the fabric. Remove the stopper from the pin and place the marked point on the pin, pressing the layers down to the bed of the machine. Replace the rubber stopper.
- Stitch over circular pintucks as desired.

[Click Here to download Pintuck Primer eBook.](#)

## Additional Techniques

- Attaching strands of beads using Bulky Overlock Foot #12/12C.
- Stitching Sashiko with Cordonnet Foot #11.
- Creating bobbinwork using Open Embroidery Foot #20/20C/20D.



# Circular Lettering

Writing in the round is easy! Simply program the desired lettering into the memory of the sewing machine. With the Circular Embroidery Attachment, the words will stitch in the round rather than in a straight line.

## Machine Settings

- Open Embroidery Foot #20/20C/20D
- Cotton or polyester embroidery thread
- Desired decorative stitch
- Needle Stop Down

## Step 1

Attach the Circular Embroidery Attachment to the left of the needle according to the instructions included in the box. The attachment can also be secured to the right of the needle to stitch letters facing opposite directions:

- Place attachment arm to the left for clockwise stitching, producing letters with their tops pointing toward the outside of the circle.
- Place the attachment arm to the right for counterclockwise stitching, producing letters with tops pointing toward the center of the circle.

## Step 2

Using the black tab, slide the pin to make the desired size circle.

## Step 3

Firmly stabilize the fabric so it will turn smoothly on the pin. Test a sample to make sure the fabric is stabilized enough to turn smoothly on the pin.

## Step 4

Determine the placement of the *center* of the desired circle; mark it on the fabric. Remove the stopper from the pin and place the marked point on the pin, pressing the layers down to the bed of the machine. Replace the rubber stopper.

## Step 5

Stitch the of lettering as programmed.

## Tips for Stitching Lettering Facing Two Directions

Program the lettering into the machine in two groups:

1. Tops of the letters pointing toward *outside* of circle
2. Tops of the letters pointing toward *center* of circle.

After stitching the first group with the attachment to the left, reposition the attachment with the arm to the right of the needle and stitch the second group of lettering with tops of the letters pointing toward the *center* of the circle. *Note: The fabric is placed on the pin in the same place for each direction of stitching.*

