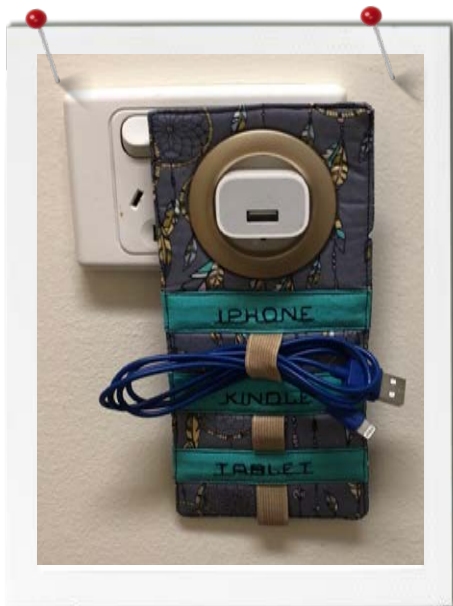


CABLE CADDY by Bree Ledingham



Materials List

- Small scraps of 1 x plain and 1 x printed fabric.
- Small scrap of Iron on Interfacing
- Fusible Foam Wadding
- 1 x 40mm Grommet
- 15cm of 15mm elastic
- Thread
- Fabric Marker
- BERNINA Foot #20 or 20C
- BERNINA Foot #37, 57 or 97
- BERNINA Cable Caddy Pattern

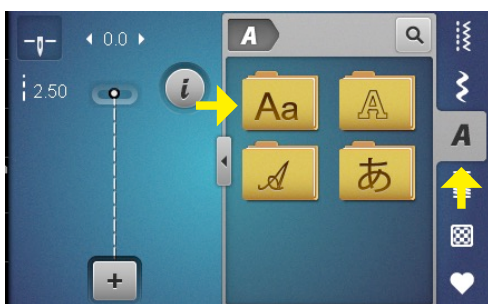
Method

- Cut out your pattern pieces and fuse the interfacing onto the back of the plain fabric strips.
- Wind a bobbin and thread your machine. Attach foot #20, the open toe foot.
- Decide what three words you would like for your cable caddy. I have selected my three most commonly used devices, i-phone, kindle and tablet.
- Select the alphabet menu and choose the standard alphabet.

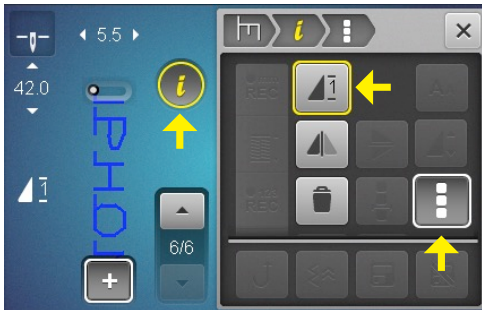
- Select Combi mode. The screen will change.



- Type in your first word.



- Select the i for icon. To make the letters one complete word, select the Complete icon. Once that is selected, you will be able to select one pattern repeat. This process means that the word will stitch out once and then stop.



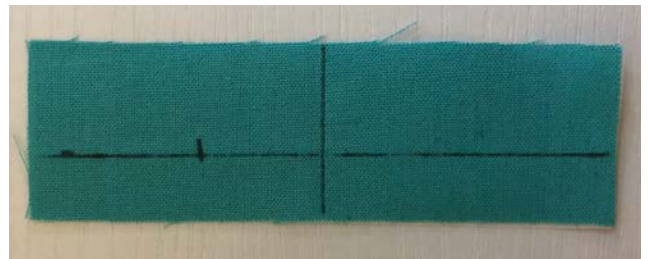
- Test sew the word on a scrap of fabric.



- If happy with the word, we will now stitch it onto one plain stripe. Start by measuring the length of the word.



- Take your plain stripe. Mark a line running lengthways. If your machine stitches 9mm wide, mark the line 10mm from the bottom edge. If your machine stitches 5.5mm wide, mark the line 12mm from the bottom edge. Find the centre on the vertical and mark it. Measure out from the centre half the length of your word and mark.

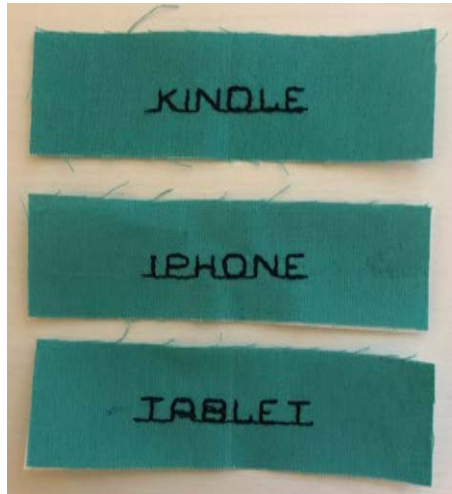


- Place the stripe under the presser foot so the long ling is inline with the left inside edge of the foot and the needle is on your marking.



- Stitch out your word.

- Repeat this process until all three words are complete.



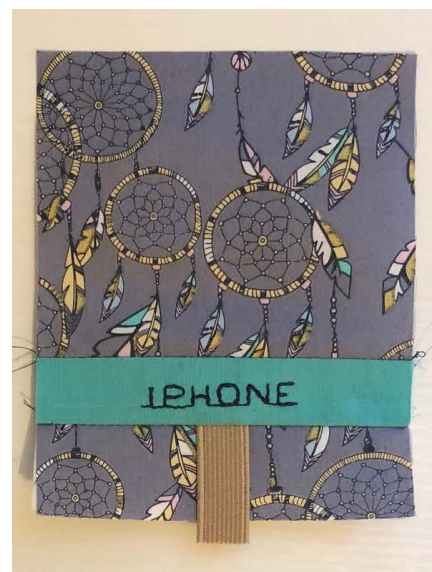
- Change to foot #37,57 or 97, the ¼ inch foot. Get out of combi mode and select straight stitch.
- Take the top section and one of the words and stitch them together using a ¼ inch seam allowance.



- Take your elastic and place the short edge at the base of your first word. Place one of your printed stripes on top, right sides together. Stitch all three with a ¼ inch seam allowance.



- Cut the elastic back so it is 5mm longer than the bottom stripe.



- Join on the next word stripe, moving the edge of the elastic up so it is sitting on the edge.

- Repeat this process until all the stripes are sewn. Stitch the bottom elastic in place using a 1/8th inch seam allowance



- Topstitch all the way around the caddy, including along the word stripes.



- Find the centre of the top section and mark it. Trace around the inside of the grommet, keeping it centred. Cut out the centre.

- Press all the word seams so they face inwards. Fuse the wadding onto the back of this section, making sure it is centred. This will leave a 1/4 inch seam allowance around all 4 edges.



- Clip the grommet into place.



- Place the back and front right sides together and stitch around 3 sides (two long and one short) making sure you don't stitch on the wadding. Turn your caddy through and press the raw edge in.

BERNINA
Cable Caddy
Back
Cut 1
Cut 1 Wadding
at dotted line

BERNINA
Cable Caddy
Top
Cut 1

BERNINA Cable Caddy
Stripes
Cut 3 Plain Fabric
Cut 3 Printed Fabric
Cut 3 Iron on Interfacing

made to create

BERNINA