

## Love Pillow

This simple 20 inch cushion is perfect for showing off the fabulous embroidery and computerized quilting of the B 990. It is quick to make as it features an envelope closure.

The background quilting is a BQM design which can be easily combined to create a nice backdrop for the embroidered LOVE design.

You need:

B 990

Giant Hoop and template

Foot #26

Foot #1D

Love Design file from the Words and Sayings folder PK1000 (last file).



## To recolor the Love Design

To match the B 990 Campaign, this design can be recolored in Isacord threads.

Select Edit and Colors to change the colors directly on the machine. Save your design in the preferred colors (My Love).

Color	Pos	Col	Pos
5450	1, 3	4111	10
5220	2	2224	11, 21
6011	4	4610	14
5822	5, 13	1321	15
0232	6, 16, 20, 24	0670	17
2160	7, 12, 18	4240	19
6043	8	1921	22
0170	9	1352	23

You further need the following:

Iron  
Rotary cutter, ruler and mat  
Sergers for neatening the seams

We recommend using:

Dark blue Fabric: 21" x 46 1/2 inch (twice the pillow width plus 6 inches)

Polyester Batting: 21" x 25 inch

Backing (optional as it is also possible to quilt without the backing, especially as it is inside the pillow and won't be seen): 21 x 25."

Pillow insert 20" x 20."

Sewing Thread to match pillow fabric.

Find the center of the fabric and mark with a washaway marker or chalk.

Center the top, batting and the backing in the Giant hoop, use the template to assist you, as we are maximizing the quilt background.

### To program the computerized quilting design background

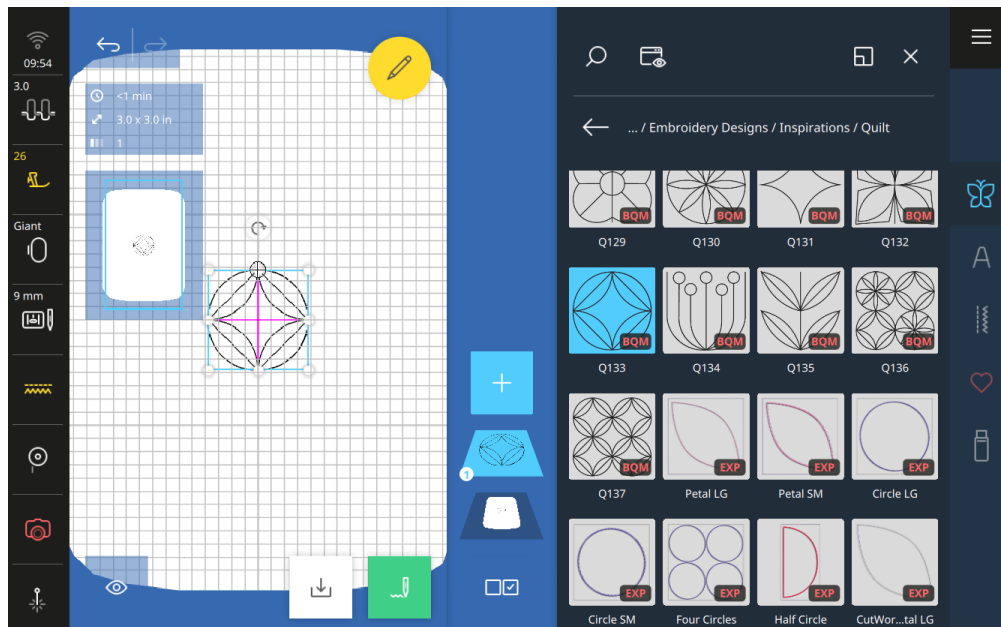
From the Inspiration / Quilt Folder, select design Q133

In Edit select Show Start/End.

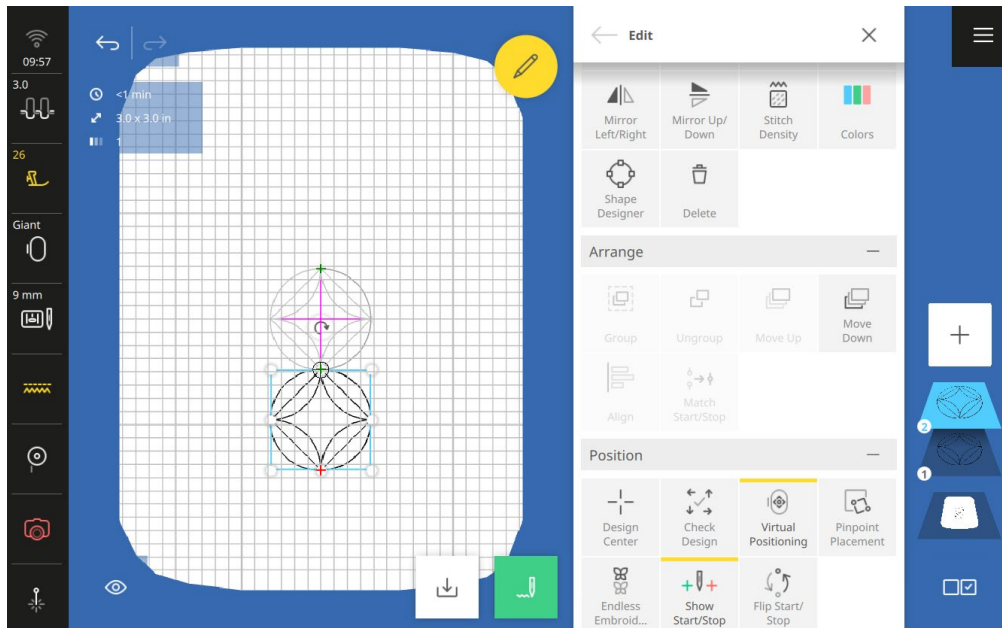
Resize the design to 3 inches (50%)

Select Giant hoop and close the hoop screen.

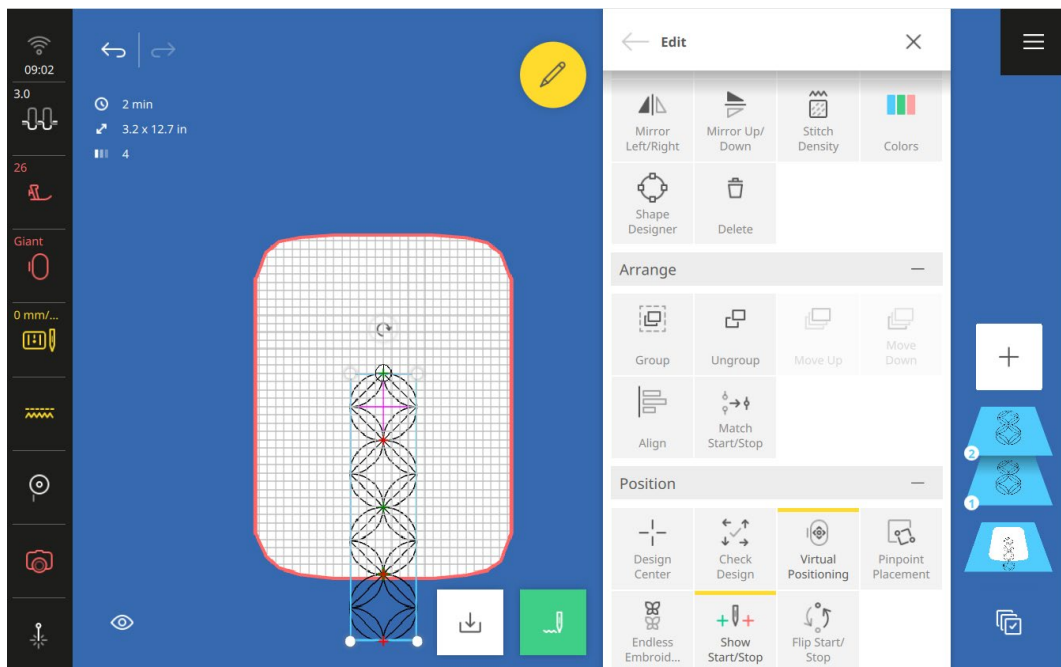
In View, click on the Grid twice. Close View.



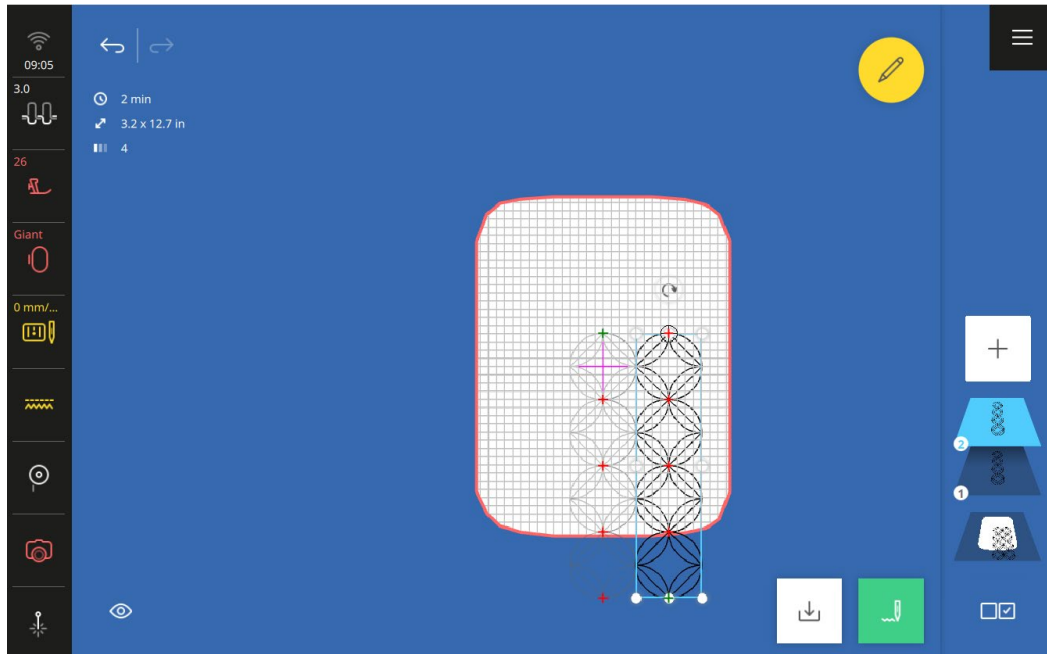
Duplicate the design.



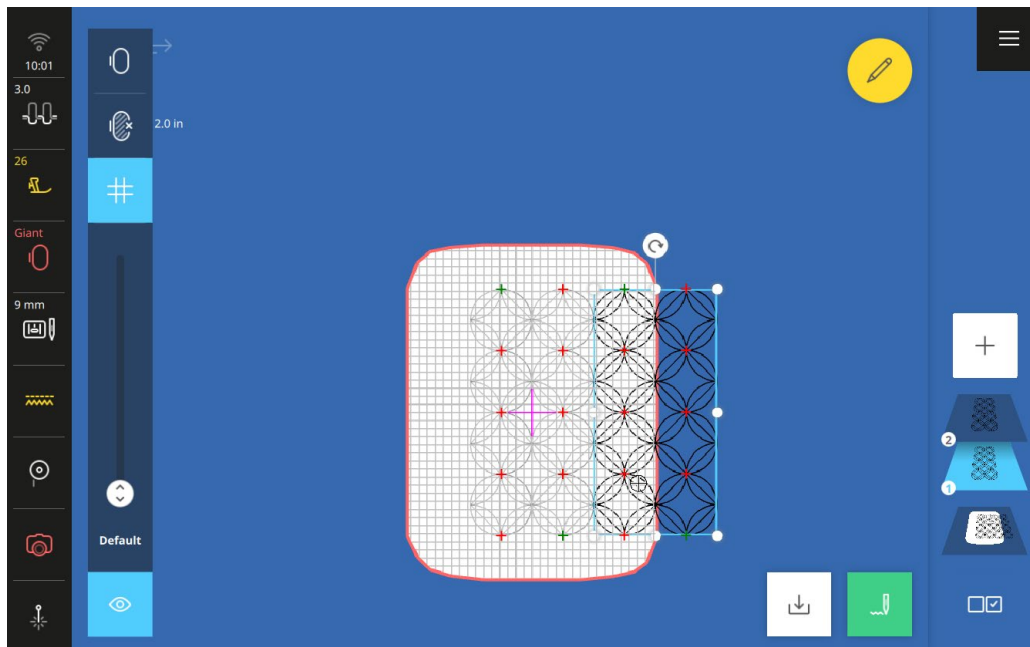
With both designs selected, group and duplicate again. Select all and use the Match Start Stop to Move the new designs below the first two.



Group the 4 designs and Duplicate. Move the new row to the right and mirror image Up/Down. Zoom in to place the rows next to each other correctly.

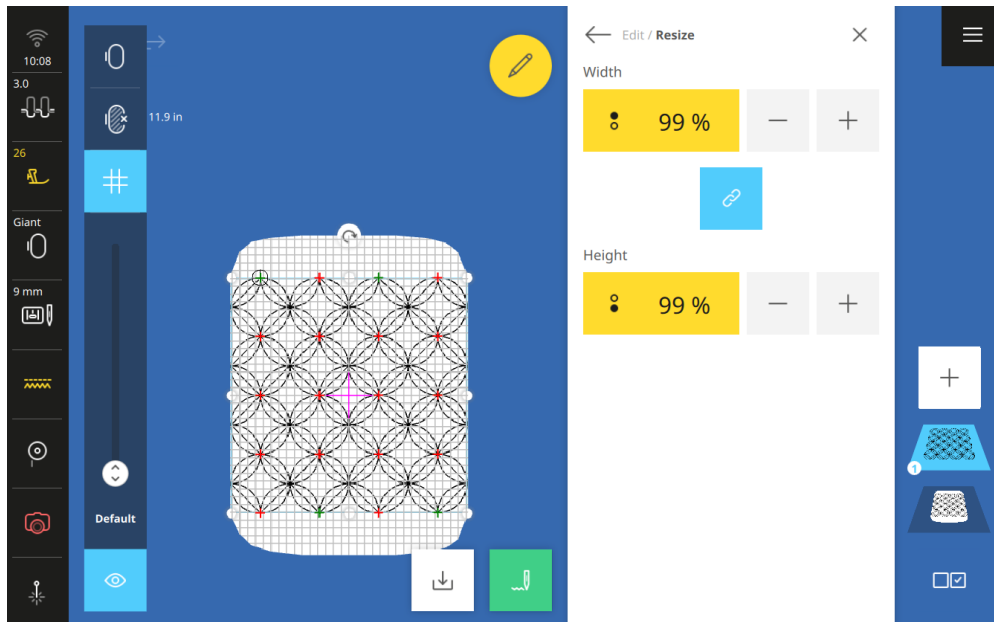


Select all, group and duplicate, use zoom to position the new group next to the first.



Select all and then Move and center your design.  
Reduce the size until the design fits the hoop: 99%

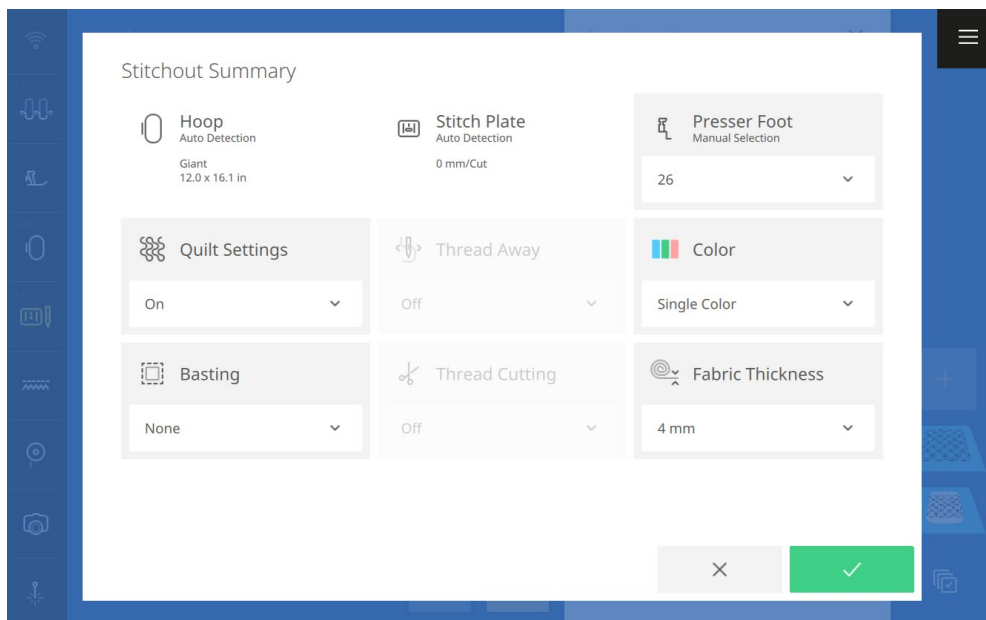
Group the whole design.



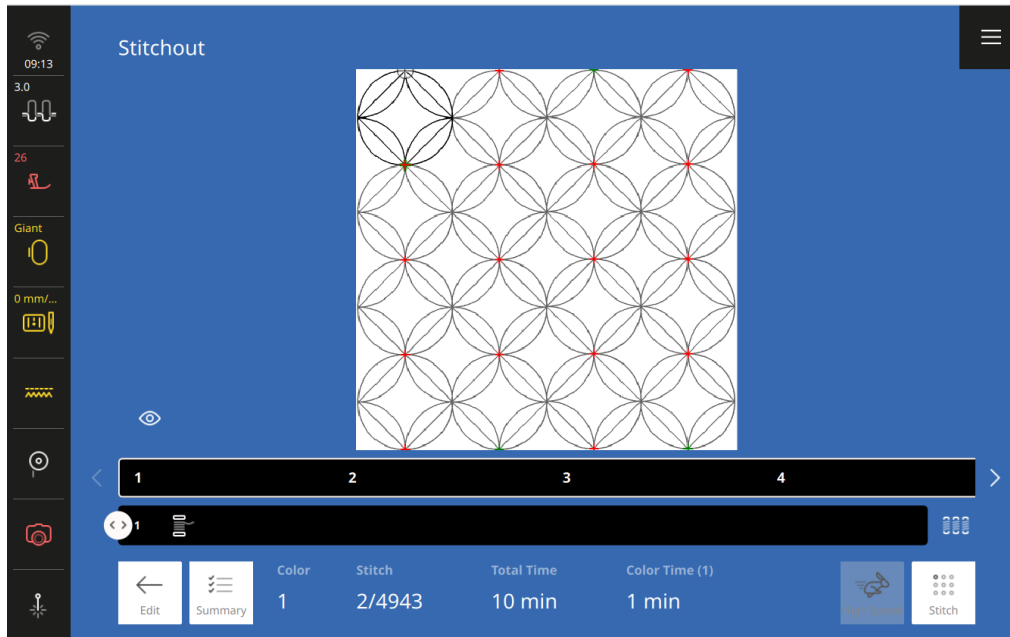
Save the design as Love Background.

Go to Stitchout.

In the Stitchout Summary, select Quilt Settings and Single Color to sew out.



Once Quilt settings are On and Single Color is selected. Let the machine stitch your quilting background.



When done, select the Love Design (My Love).  
Delete the quilt background.  
Stitch the Love Design.



When done, remove the embroidery from the hoop.  
Trim back the batting to the quilting.  
Check the panel is 21 x 46 1/2 inch and if necessary, trim.

**To construct the pillow**

On the two short ends fold over 1/4 inch once and press and then fold again, use clips to secure. Attach foot #1D and straight stitch. Topstitch the hems in place.

Place the panel right side up and fold over one end and then the other so they overlap to create a 20 inch piece. Clip in place and sew a 1/2 inch seam down each side. Neaten with a serger and turn through making sure the corners are formed out. Press.

Stuff with the pillow insert and love it!