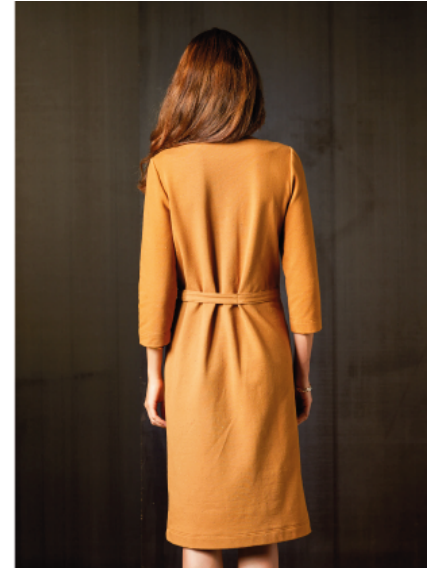


# Jersey dress "Swantje"

## Model 321-12

### Size 36-48



#### PRINT THE CUT

1. Open the pattern PDF and set the control square to Page 1 with the setting "Original size" on DIN Print A4 paper (US-Letter). (Do not click on "Adjustment to page size"!) )
2. Check the square – if it is 10×10 cm, print out the whole cut sheet.
3. Place all pages next to each other as indicated by the arrows and adhere them row by row along the boundary lines, then glue the rows together.
4. Compare the body measurements with the table measurements and cut out the cut parts in the appropriate size. (The overview of the cut parts is on the pattern sheet.)

**Important:** Instructions do not include seam allowances, unless otherwise indicated!

#### SUPPLIES

- 1.8–1.9 m cotton sweatshirt fabric with elastane, 150 cm wide
- Woven interlining G 785

#### OPTIONAL ACCESSORIES

- BERNINA Overlocker
- Elastic sewing thread "SERAFLEX"
- [Walking Foot #50](#)
- Reversible set

#### CUTTING

- 1 1 × front part on the fold
- 1 1 × front facing on the fold
- 2 1 × back part on the fold
- 2 1 × rear facing on the fold
- 3 2 × sleeve

Tie strap 300 up to 330×5.5 cm in total.

#### INSTRUCTIONS

1. Iron the woven interlining on the facings and let them cool off thoroughly. Close the shoulder seams of the dress and the facings. Sew the whole facing right side on right side along the neckline edge and clip the allowances in the curves. Fold the facing inwards and fix it at the shoulder seams. Topstitch the neckline edge.
2. Close the side seams. Sew the tie straps together. Mark 35/37/39/41/43/45/48.5 cm from about the middle of the length towards both ends. Place the remaining length from both ends right side on right side on top of each other and sew them together along the sides. Cut back the allowances in layers. Turn both ends over with the reversible set. Fold in the allowances on the centre piece and sew on the right side of the dress according to the cutting pattern.
3. Close the sleeve seams. Slightly gather the top shaping and sew in the sleeve. Hem the dress and sleeves.

