

Embroidery
Project

BERNINA 830

Tuscan Gardens
Pillow

Created by Elaine Cibelli

Bring a symphony of sun-kissed flowers and leaves into your home with the Old World elegance of OESD's Tuscan Gardens, Crafter's Collection #1105, a BERNINA Exclusive.

Visit

www.berninausa.com

Projects • Webinars
Promotions



Supplies

Machine & Accessories

- BERNINA 830 Sewing and Embroidery Machine*
- BERNINA Embroidery Software 6
- Jumbo Hoop*
- Master Hooper
- Pintuck and Decorative Stitch Foot #46C
- Corded Pintuck Attachment
- Bulky Overlock / Braiding Foot #12/12C

Embroidery Collection

- OESD Crafter's Collection #1105, Tuscan Gardens

Fabric & Notions

- 1 yard silk dupioni
- 1 yard Armo Weft fusible interfacing
- 1½ yards of filler cord

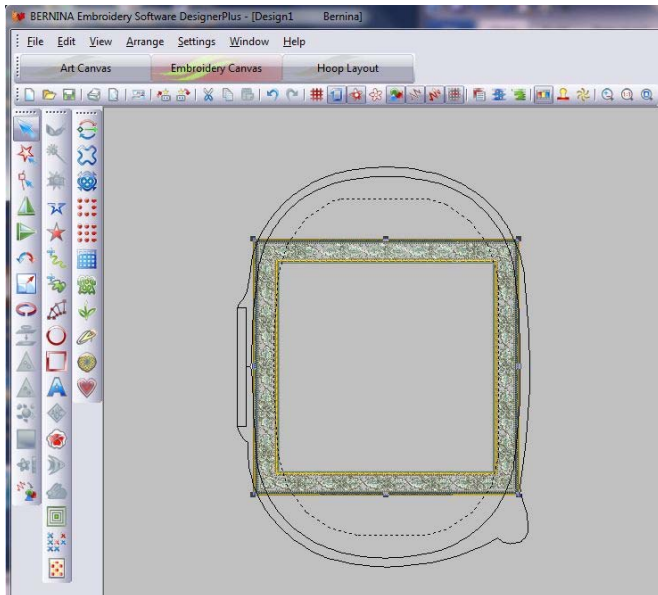
- OESD Clean & Tear Stabilizer
- 505 Temporary Adhesive Spray
- Isacord embroidery thread
- Organ Embroidery Needles, size 80/12
- Wash-away marker or chalk
- Thumb tacks or pins
- Buttonhole gimp
- Seam sealant
- 18" x 18" square pillow form

*Other embroidery machines and/or smaller hoops can be used; the software will split the design into more pieces and there will be more re-hoopings.

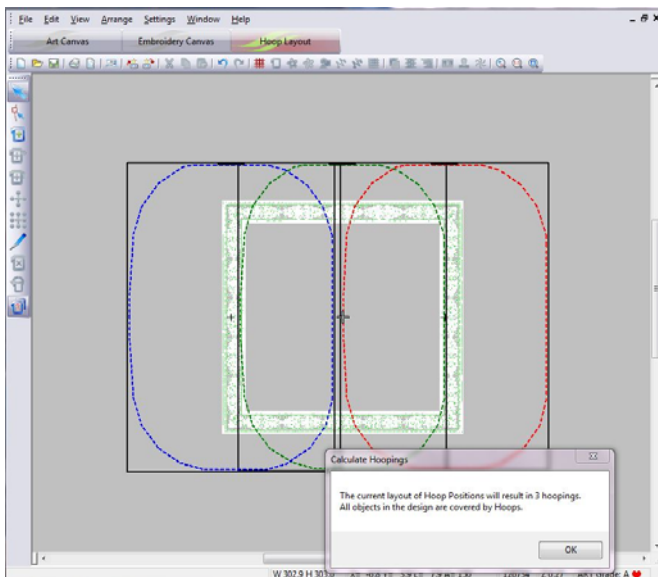
Combine the Embroidery Designs

Note: The border design will be stitched first to allow the center designs to overlap slightly.

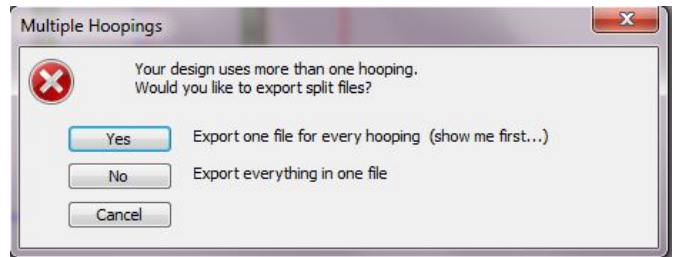
- Open a New file in BERNINA Embroidery Software 6 and Insert designs BE110528 and BE110529. Use the *Mirror Merge* and *Alignment* tools to duplicate and align the border designs.



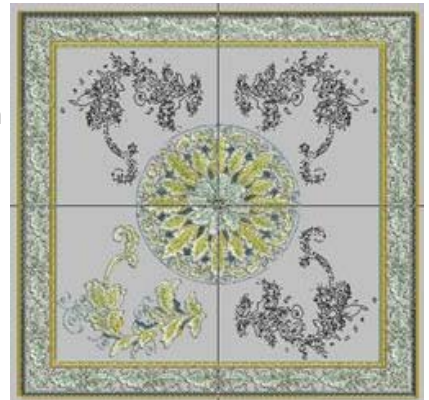
- Select the *Hoop Layout Tab* and add hoops to the left and right to cover the entire border design. Select *Calculate Hoopings*, which should result in three hoopings. The BERNINA Embroidery Software 6 will split the border into separate sections to fit the selected hoop and insert reference marks as guides for aligning the designs.



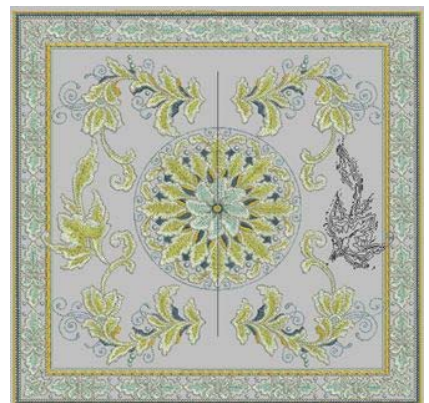
- Return to *Embroidery Canvas* and select *File > Save As*; save as **Master Border.art**. When the Multiple Hoopings dialog box opens, select *No-Export everything in one file*.
- Select *File > Save As*; this time save the design and select *Yes-Export one file for every hooping*. Select *Save All*.



- Open a New file and Insert the **Master Border** to use as a guide for the center design. The border will come in grouped.
- Insert BE110501 and Select All (Ctrl + A) and click on the *Align Centers* icon.
- Insert BE110505, right click on the design to open *Object Properties*. Click on the *General Tab* and change *Rotate By* to 25° and click OK. Move the design to the lower left. While the design is still selected, click on the *Mirror Merge Horizontal and Vertical* icon; align the designs using the X/Y lines to center them over the medallion center.



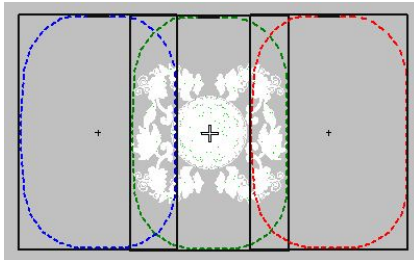
- Insert design BE110514, placing it into position; it will overlap the border slightly. Click on the *Mirror Merge Horizontal* icon; align the designs using the Y lines to center them over the medallion center.



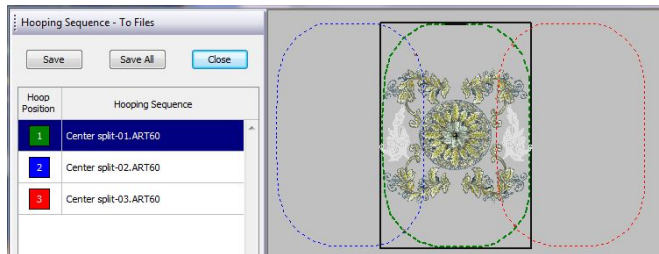


- Delete the entire border design.

- Select the *Hoop Layout* tab and add hoops to the left and right to cover the entire border design. Select *Calculate Hoopings*, which should result in three hoopings.



- Return to *Embroidery Canvas* and select *File > Save As*; name the design **Pillow Center Master.art**. When the *Multiple Hoopings* dialog box opens, select *No - Export everything in one file*.
- Once again select *File > Save As*; name the design **Center Split.art**; this time select *Yes - Export one file for every hooping*. *Save All*.

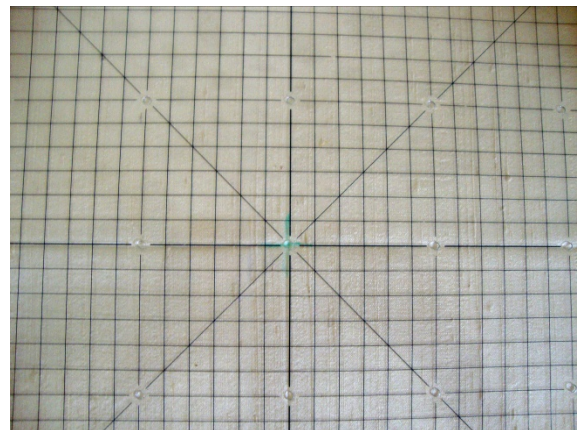


Prepare the Fabric

- Cut one 21" x 21" square from the pillow top fabric and one from the Armo Weft interfacing. Follow the manufacturer's instructions to fuse the Armo Weft interfacing to the wrong side of the silk dupioni.
- Mark the center of the pillow top fabric with a wash-away marker or chalk

Stitch the Designs

- Spray a piece of Ultra Clean and Tear stabilizer with 505 Temporary Spray Adhesive. Center the pillow top fabric on the stabilizer.
- Place the outer hoop on the Master Hooper and hoop the fabric and stabilizer using the hoop template to maintain the center.



- Open the center **Border** split design in the embroidery machine and stitch out the design and the reference marks. Remove the fabric from the hoop and remove the excess stabilizer.



- ◆ Hoop another piece of Ultra Clean and Tear stabilizer. Open the second **Border** split design in the embroidery machine. Stitch the reference marks on the stabilizer.
- ◆ Remove the hoop from the machine and spray the stabilizer with 505. Place thumbtacks through the centers of the reference marks from the underside of the stabilizer.

- ◆ Place the hoop on the Master Hooper. Align the reference marks on the pillow top fabric with the points of the thumbtacks. Smooth the fabric into place.



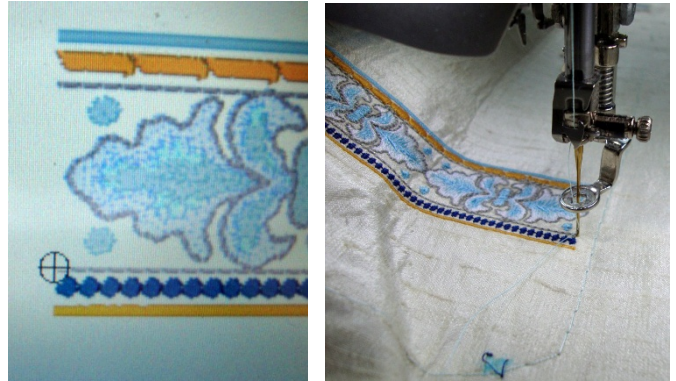
Tip: To keep the fabric in place while aligning the second reference mark, use a tie tack lapel pin back clasp.

Note: Straight pins can also be used to align the reference marks from the top of the pillow top fabric to the reference marks on the stabilizer.

- ◆ Continue stitching the Border designs in the same manner, removing the excess stabilizer, multi-hooping, and aligning the reference marks.



- ◆ When stitching with the BERNINA 830, double-check the alignment at the machine using Absolute Check, rocking the needle to make sure the designs align properly.



- ◆ Spray a piece of Ultra Clean and Tear stabilizer with 505 and center the pillow top on it. Use the Master Hooper and hoop template to keep the border straight.
- ◆ Open the center design with the medallion, attach the hoop to the embroidery machine, and verify the center. Stitch the designs and the reference marks.



- ◆ Following the same procedure used for the border — re-hooping the stabilizer and matching the reference points—stitch the remaining designs.
- ◆ Remove the hoop from the machine. Remove the fabric from the hoop and remove the excess stabilizer from the wrong side of the pillow top.
- ◆ Press the pillow top wrong side up on a terry towel.

Make the Pillow

- ◆ Switch to the sewing side of the BERNINA 830.
- ◆ Attach the Corded Pintuck Attachment, threaded with buttonhole gimp. Attach the Pintuck and Decorative Stitch Foot #46C.
- ◆ Mark a line 1" away from the border and stitch a corded pintuck all the way around the border.
- ◆ Place the outside groove of the foot over the first pintuck and stitch another pintuck.



- ◆ Stitch a third pintuck to the outside of the first pintuck.
- ◆ Press the pillow top; trim to 19" x 19".
- ◆ Cut 2"-wide strips of fabric for the covered cording; join them to form a strip of at least 80".
- ◆ Attach Bulky Overlock Foot #12/12C to the machine.
- ◆ Fold the fabric strip around the cording and place them under the foot with the raw edges to the right. Stitch.



- ◆ Stitch the cord to the pillow top, matching the raw edges and clipping the seam allowances of the covered cording at each corner.
- ◆ Cut two pillow backs, 19" x 15" and 19" x 12". Fold under 1/2" and press. Fold under 1"; press and stitch.
- ◆ Overlap the hemmed edges of the pillow backs to form a 19" square. Pin baste the overlaps.
- ◆ Place the pillow front and backs right sides together, matching the outer edges; pin.
- ◆ Stitch around the outside edges of the pillow using a 1/2" seam allowance. Finish the edges of the seam allowances with a zigzag stitch or serger.

