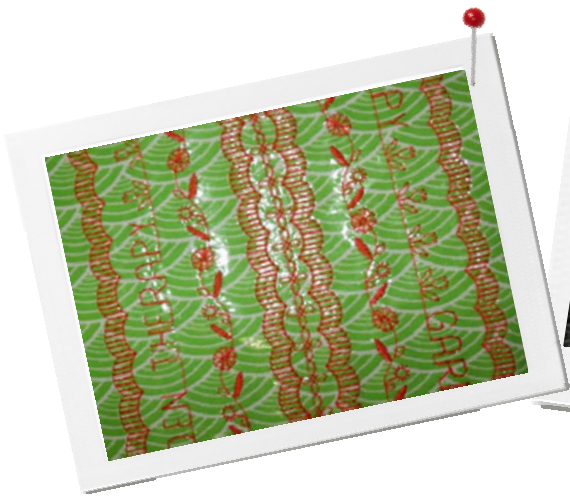


**BERNINA**  
5 Series

# Garden Kneeling

Created by Kay Hickman

Spring is just around the corner, a time for gardening and adding a bit of creativity to your landscape. Whether gardening is a joy or a chore, you can add a bit of zip to your outdoor duties by creating a simple kneeling pad made special with bright fabrics, laminates and beautiful decorative stitches from the BERNINA 580 E.



## Supplies

### Machine & Accessories

- BERNINA 580 Sewing & Embroidery Machine
- Zigzag Foot with Non-Stick Sole #52/#52C/#52D
- Open Embroidery Foot with Non-Stick Sole #56

### Fabric & Notions

All fabrics are from the Lillifed Fabric Collection by Benartex and are laminated with Therm-o-web HeatnBond® Iron-on Vinyl.

- Two 15" x 24" rectangles for front and back - green print (5966-33)
- Two 4" x 15" rectangles for handles - orange print (5966-33)
- Therm-o-web HeatnBond® Iron-on Vinyl  
Cut one vinyl piece for each fabric piece.

- LightWeight Tear Away Stabilizer
- Microtex Needles - Size 75
- 12" of ¾" wide hook and loop tape
- 12" x 18" x 2" foam pad
- Blue painter's tape

### Threads

- Isacord Thread for decorative stitches
- Metrosene Plus thread for construction

**Visit [bernina.com](http://bernina.com)**

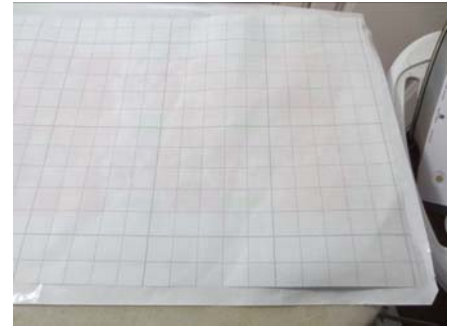
**Projects • Webinars • Promotions**

## Laminate all fabric pieces

- Cut fabric pieces to size specified and laminate with ThermoWeb Heat n Bond following manufacturer's suggestions.
- Protect your ironing surface with a non-stick pressing sheet.
- Save paper to use as pressing sheets later during the construction of the project.

## Tips for Working with Laminated Fabric

- Use clips instead of pins. Pins will leave permanent visible holes in the fabric.
- Use a presser foot with a non-stick sole for best results when stitching. *Zigzag Foot with Non-Stick Sole #52C and Open Embroidery Foot with Non-Stick Sole #56 are used in this project.*
- Options for marking laminated fabrics include:
  - ◊ Mark on the wrong (un-laminated) side of the laminated fabric.
  - ◊ Place painter's tape in area to be marked and mark on the tape.
  - ◊ Fold the fabric and *lightly* crease mark.
  - ◊ Use a Frixion marking pen, but use light strokes and not a lot of pressure. (This pen's marks can be removed with heat. Place a non-stick pressing sheet over the laminated fabric before using the iron set on a low setting to remove the marks.)



## Selecting Stitches on the BERNINA 580 E

To select a decorative stitch via the Menus:

- Touch the Decorative Stitch icon.
- Select the menu of your choice. Scroll up and down using the arrows below the folders to preview all the decorative stitch menus.
- When a folder is selected, a new screen opens showing the decorative stitches in that category. Use the arrows to scroll up or down and touch the screen to select the stitch of your choice.
- The stitch will appear on the machine screen with default setting ready to stitch. The visual on the screen shows the stitch in relation to the size of the presser foot.

To select a stitch by number:

- Select the 0-9 icon.
- Touch the screen to select the number of the design.
- Touch the green check.
- The stitch will appear on the machine screen with the default settings ready to stitch. The visual on the screen shows the stitch in relation to the size of the presser foot.

To change any of the defaults, touch the "I" (Information) icon.

- Here you can activate a number of features including Needle Position, Mirror Image Left / Right, Mirror Image Up / Down, and Thread Tension, as well as a number of other features.
- You can sew with this screen open, or touch the back button to return to the previous screen.

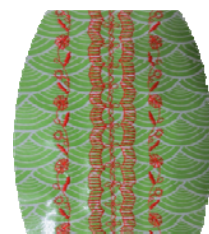
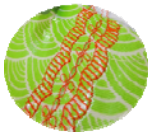
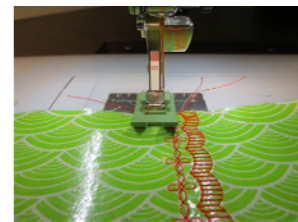
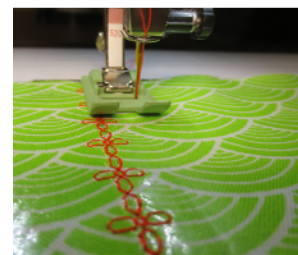
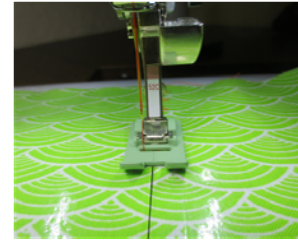
To activate Pattern Begin,

- Touch the arrow on the center of the stitches on screen. Note: you will see this arrow only after you have started and stopped stitching a decorative stitch.



## Add Decorative Stitches

- On one of the 15" x 24" pieces, mark a vertical line 10 1/2" to the left of one short edge. This will be the guideline for the center row of decorative stitches.
- Slide a piece of LightWeight Tear Away under the fabric.
- Select the decorative stitch #749 (in Menu 701).
- Attach Foot #52C.
- Align the center notched line on the center front of the foot with the drawn center line.
- Stitch from cut edge to cut edge.
- Select Stitch #746. Position the left edge of the foot along the left side of the previous stitching as shown.
- Select Pattern Begin.
- Select Mirror Image Left / Right and stitch the mirrored Stitch #746 to the right of the original stitched line.
- Stitch #143 to the left of the stitch set 1 inch from the original center line.
- Select the Mirror Image Left/right icon and stitch mirrored Stitch #143 one inch to the right of the original stitched line.



## Combine Lettering and Decorative Stitches

Combine lettering to create text:

- Select the Single/Combi Mode Icon.
- Select the Alphabet Menu.
- Select the Block Alphabet.
- Add the lettering and flowers:
  - ◊ Individually key in the letters GARDEN. Use the arrows to scroll up and down to access the appropriate letter.
  - ◊ Scroll down and select the space. (This appears as an underline and is found following the number 0.)
  - ◊ Key in the letters THERAPY.
  - ◊ Touch the Decorative Stitch icon, and select Menu 101. Touch Stitch 101 three times to add three flowers.
  - ◊ Touch the Combination Begin icon on the screen. The first G should be highlighted. You are now ready to stitch the combination.
- Stitch from the top to the bottom on the right side of the stitched set. If you notice bobbin thread showing on the top side, loosen the needle tension.
- Turn the fabric and stitch from the bottom up on the other side of the stitched set.

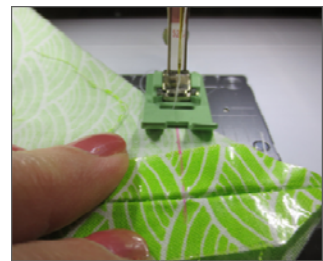
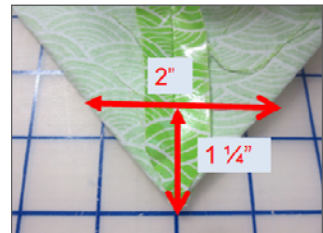
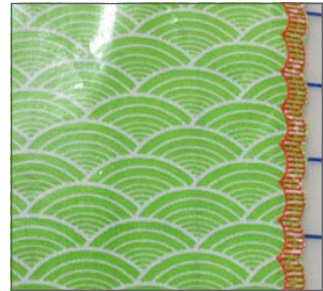


## Add Another Row of Decorative Stitch

- Select Stitch #746, touch clear to return the stitching to its default setting and stitch to the right of the stitched set. Align the presser foot with the top of the lettering row.
- Touch Pattern Begin and select the mirror image Left / right icon and stitch the same stitch to the left of the group.
- Remove the excess stabilizer from the back side. (Save the stabilizer scraps to use later.)

## Construct the Bag

- Place the front and back right sides together. Use clips as pins to secure one side. Stitch the side seam with a 1/2" seam allowance.
- Open seam allowance and finger press.
- Open the fabric out flat. Use a ruler to straighten the top edge of the fabric.
- Select Stitch #746. Touch the Clear button to return the stitch to its default settings.
- Slide the stabilizer scrap under the fabric. Align the right edge of the presser foot with the cut edge of the fabric and stitch the scalloped stitch from cut edge to cut edge.
- Remove the stabilizer from the back side of the fabric.
- Use a sharp pair of scissors to trim the laminated fabric close to the scallops.
- Fold the fabric with right sides together and stitch the second side with a 1/2" seam allowance.
- Stitch the bottom edge with a 1/2" seam allowance. Clip the corners to eliminate bulk.
- At each bottom corner, fold the bag so that the side seam and the bottom seam are stacked on one another and the corner forms a point.
- Measure up about 1 1/4" along the seam line.
- Draw a line perpendicular to the seam line at that point. The distance from fold to fold should be about 2".
- Stitch across the drawn line. Stitch again about 1/8" closer to the point.
- Trim off the point.
- Turn the bag right side out.



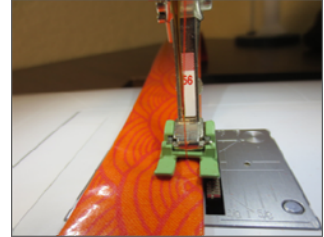
## Apply Hook & Loop Tape

- Draw a dotted line about 3/4" from the top edge on the inside of the bag.
- Position the top long edge of the hook side of the Hook & Loop Tape along the drawn line with the end of the tape about an inch from the side seam.
- Repeat for the loop side of the hook and loop tape on the front of the bag.



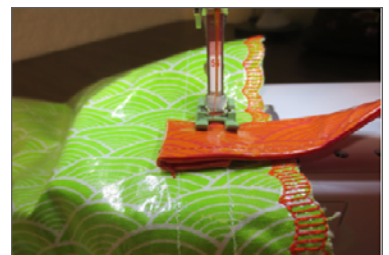
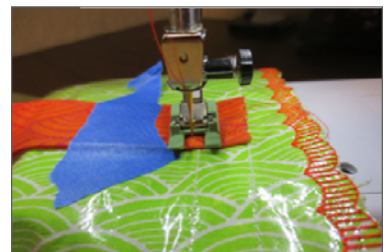
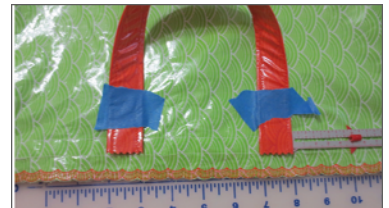
## Create the Handles

- Fold the 4" x 15" handle in half lengthwise with wrong sides together.
- Open the fold and fold each cut edge to the center.
- Fold in half again and press.
- Attach Open Embroidery Foot #56 to the machine. Position the inside of the right toe along the fold of the handle. Adjust the needle position to the far left. Increase the Stitch Length to a 3 and stitch down one long edge.
- Select the Mirror Image Left / Right Icon. Align the inside of the left toe along the left folded edge of the handle.
- Repeat for the second handle.
- Trim the short ends with pinking shears.



## Attach the Handles

- Place the handles on the front of the bag. Position the short cut edges approximately 3/4" from the top scalloped edge with the sides of the handles approximately 4" in from each side. The loop of the handle will be toward the center of the bag at this time. Secure with painter's tape.
- Stitch across the handle two or three times about 3/4" from the pinked edge.
- Flip the handle toward the top of the bag.
- Stitch through all thicknesses about 1/2" from the folded edge of the handle.
- Repeat steps for the back handle.
- Insert the foam into the bag, seal the end shut with the hook and loop tape, and your new kneeling pad is now ready for gardening fun!
- Look for other companion gardening accessories projects on [bernina.com](http://bernina.com)!



Garden Tool Bag

Garden Apron